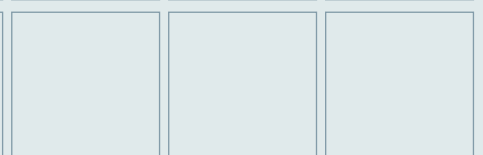
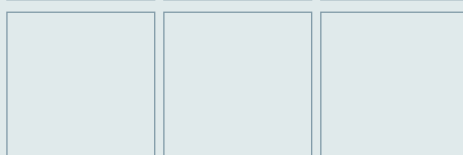
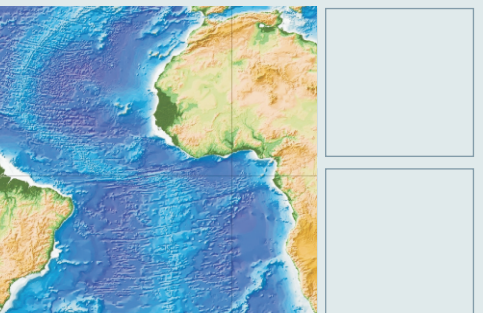
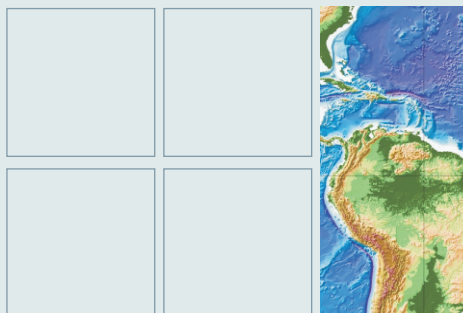
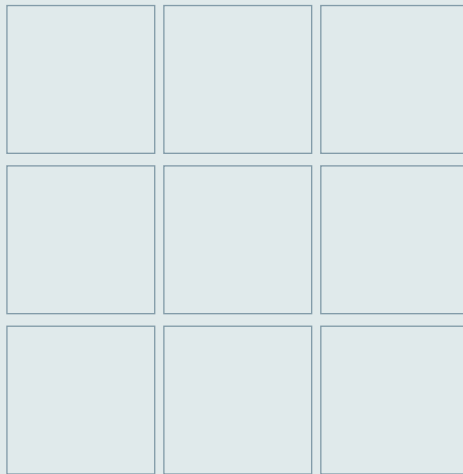
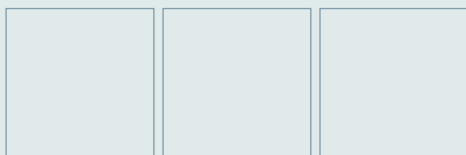


**Submission
to the
Commission on the Limits of the Continental Shelf
pursuant to Article 76, paragraph 8
of the
United Nations Convention on the Law of the Sea 1982
in respect of

Ascension Island**



United Kingdom of Great Britain and Northern Ireland

Executive Summary - Table of Contents

- 1 Introduction
- 2 Outer limit of the continental shelf around Ascension Island
- 3 Provisions of Article 76 invoked
- 4 Names of Commission members who provided advice during the preparation of the submission
- 5 Absence of disputes
- 6 Detailed description of the outer limit of the continental shelf around Ascension Island
- 7 States Bodies Responsible for the Preparation of the Submission

Ascension Island

Executive Summary

1. Introduction

This submission to the Commission on the Limits of the Continental Shelf is made by the United Kingdom of Great Britain and Northern Ireland (UK) pursuant to Article 76, paragraph 8 of the Convention in support of the establishment of the outer limit of the continental shelf in the area around the UK's Overseas Sovereign Territory of Ascension Island.

Ascension Island is a dependency of the British Overseas Territory of Saint Helena, some 750 nautical miles southeast. Executive authority is vested in the Queen, who is represented on Ascension by the Administrator.

Ascension Island has had a long history of occupation and economic activity that qualifies it under UNCLOS Article 121 for both an Exclusive Economic Zone and a Continental Shelf.

2. Outer limit of the continental shelf in the Area of Ascension Island

The present submission deals only with the outer limit of the continental shelf appurtenant to Ascension Island and thus is a partial submission of the UK.

3. Provisions of Article 76 invoked

The outer limits contained in this submission are based on the provisions of Article 76.4 (a)(ii), 76.4 (b) 76.6 and 76.7.

4. Names of any Commission members who provided advice during the preparation of the submission

No advice was provided by any member of the Commission.

5. Absence of disputes

In accordance with paragraph 2(a) of Annex 1 to the Commission's Rules of Procedure, the UK wishes to inform the Commission that the area of continental shelf that is the subject of this partial submission is not the subject of any dispute between them and any other state.

6. Description of the outer limit of the continental shelf around Ascension Island

The outer limit around Ascension Island can be described in two parts – to the east and west of Ascension respectively. In both areas, the provision contained in paragraph 4 (a) (ii) of Article 76 (60 nautical miles from the foot of the continental slope) has been applied. Ten foot of the slope points have been identified in the East Area (FOS 1E to FOS 10E) of which 8 contribute to the outer limit (FOS 1E, FOS 3E to FOS 7E and FOS 9E to FOS 10E). In the

West Area all the foot of slope points (FOS 1W to FOS 11W) exceed 350M from the territorial sea baseline and do not contribute to the outer limit. In this area the outer limit is defined by 350M arcs from the baseline as provided for in Article 76, paragraph 6.

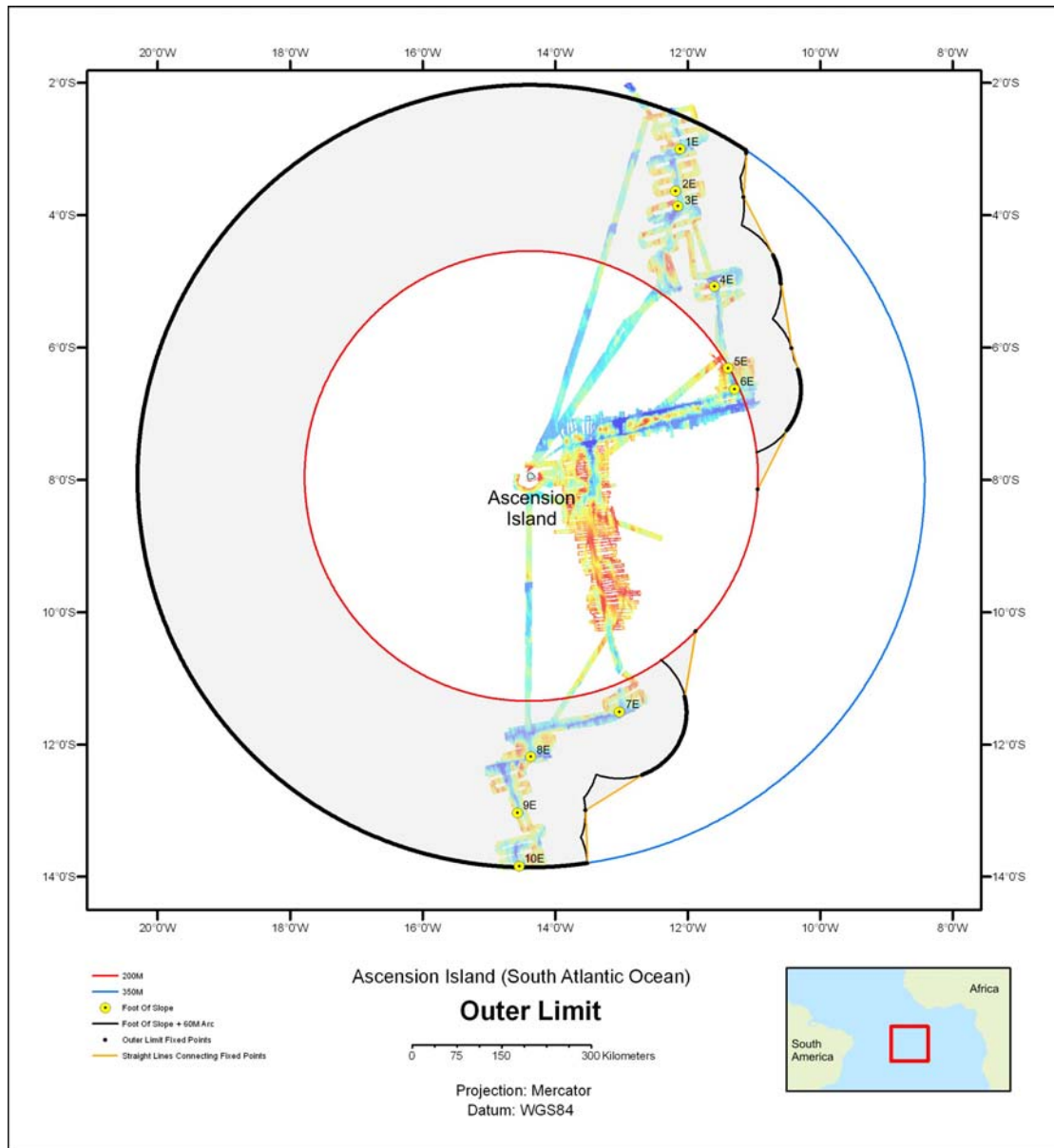


Figure 1 Outer limit of the continental shelf beyond 200M around Ascension Island highlighted in grey.

Table 1 List of coordinates and method of determination for each fixed point describing the outer limit.

FP	Latitude (South)	Longitude (West)	Method	From FP	To FP	Distance (M)
1	10.2871641	11.8779110	Fixed Point on 200M limit			
2	11.2704896	12.0392147	Fixed point from 60M envelope of arcs generated from FOS 7E	1	2	59.5
3	11.2867823	12.0353048	Fixed point from 60M envelope of arcs generated from FOS 7E	2	3	1
4	11.3031339	12.0316711	Fixed point from 60M envelope of arcs generated from FOS 7E	3	4	1
5	11.3195444	12.0283136	Fixed point from 60M envelope of arcs generated from FOS 7E	4	5	1
6	11.3360071	12.0252347	Fixed point from 60M envelope of arcs generated from FOS 7E	5	6	1
7	11.3525177	12.0224319	Fixed point from 60M envelope of arcs generated from FOS 7E	6	7	1
8	11.3690737	12.0199077	Fixed point from 60M envelope of arcs generated from FOS 7E	7	8	1
9	11.3856687	12.0176641	Fixed point from 60M envelope of arcs generated from FOS 7E	8	9	1
10	11.4022960	12.0157013	Fixed point from 60M envelope of arcs generated from FOS 7E	9	10	1
11	11.4189555	12.0140192	Fixed point from 60M envelope of arcs generated from FOS 7E	10	11	1
12	11.4356406	12.0126178	Fixed point from 60M envelope of arcs generated from FOS 7E	11	12	1
13	11.4523447	12.0114994	Fixed point from 60M envelope of arcs generated from FOS 7E	12	13	1
14	11.4690654	12.0106617	Fixed point from 60M envelope of arcs generated from FOS 7E	13	14	1
15	11.4857985	12.0101070	Fixed point from 60M envelope of arcs generated from FOS 7E	14	15	1
16	11.5025372	12.0098353	Fixed point from 60M envelope of arcs generated from FOS 7E	15	16	1
17	11.5192771	12.0098465	Fixed point from 60M envelope of arcs generated from FOS 7E	16	17	1
18	11.5360160	12.0101407	Fixed point from 60M envelope of arcs generated from FOS 7E	17	18	1
19	11.5527472	12.0107179	Fixed point from 60M envelope of arcs generated from FOS 7E	18	19	1
20	11.5694686	12.0115780	Fixed point from 60M envelope of arcs generated from FOS 7E	19	20	1
21	11.5861712	12.0127189	Fixed point from 60M envelope of arcs generated from FOS 7E	20	21	1
22	11.6028529	12.0141450	Fixed point from 60M envelope of arcs generated from FOS 7E	21	22	1
23	11.6195093	12.0158518	Fixed point from 60M envelope of arcs generated from FOS 7E	22	23	1
24	11.6361358	12.0178393	Fixed point from 60M envelope of arcs generated from FOS 7E	23	24	1
25	11.6527259	12.0201075	Fixed point from 60M envelope of arcs generated from FOS 7E	24	25	1
26	11.6692774	12.0226565	Fixed point from 60M envelope of arcs generated from FOS 7E	25	26	1
27	11.6857859	12.0254862	Fixed point from 60M envelope of arcs generated from FOS 7E	26	27	1
28	11.7022424	12.0285944	Fixed point from 60M envelope of arcs generated from FOS 7E	27	28	1
29	11.7186470	12.0319810	Fixed point from 60M envelope of arcs generated from FOS 7E	28	29	1
30	11.7349954	12.0356439	Fixed point from 60M envelope of arcs generated from FOS 7E	29	30	1
31	11.7512785	12.0395853	Fixed point from 60M envelope of arcs generated from FOS 7E	30	31	1
32	11.7674966	12.0438006	Fixed point from 60M envelope of arcs generated from FOS 7E	31	32	1
33	11.7836428	12.0482899	Fixed point from 60M envelope of arcs generated from FOS 7E	32	33	1
34	11.7997129	12.0530532	Fixed point from 60M envelope of arcs generated from FOS 7E	33	34	1
35	11.8157023	12.0580861	Fixed point from 60M envelope of arcs generated from FOS 7E	34	35	1
36	11.8316068	12.0633906	Fixed point from 60M envelope of arcs generated from FOS 7E	35	36	1
37	11.8474218	12.0689647	Fixed point from 60M envelope of arcs generated from FOS 7E	36	37	1
38	11.8631430	12.0748060	Fixed point from 60M envelope of arcs generated from FOS 7E	37	38	1
39	11.8787660	12.0809123	Fixed point from 60M envelope of arcs generated from FOS 7E	38	39	1
40	11.8942863	12.0872836	Fixed point from 60M envelope of arcs generated from FOS 7E	39	40	1
41	11.9096995	12.0939176	Fixed point from 60M envelope of arcs generated from FOS 7E	40	41	1
42	11.9250013	12.1008122	Fixed point from 60M envelope of arcs generated from FOS 7E	41	42	1
43	11.9401872	12.1079650	Fixed point from 60M envelope of arcs generated from FOS 7E	42	43	1
44	11.9552551	12.1153739	Fixed point from 60M envelope of arcs generated from FOS 7E	43	44	1
45	11.9701983	12.1230387	Fixed point from 60M envelope of arcs generated from FOS 7E	44	45	1
46	11.9850146	12.1309551	Fixed point from 60M envelope of arcs generated from FOS 7E	45	46	1
47	11.9996975	12.1391231	Fixed point from 60M envelope of arcs generated from FOS 7E	46	47	1
48	12.0142425	12.1475403	Fixed point from 60M envelope of arcs generated from FOS 7E	47	48	1
49	12.0286496	12.1562023	Fixed point from 60M envelope of arcs generated from FOS 7E	48	49	1
50	12.0429123	12.1651069	Fixed point from 60M envelope of arcs generated from FOS 7E	49	50	1
51	12.0570261	12.1742539	Fixed point from 60M envelope of arcs generated from FOS 7E	50	51	1
52	12.0709866	12.1836391	Fixed point from 60M envelope of arcs generated from FOS 7E	51	52	1
53	12.0847917	12.1932601	Fixed point from 60M envelope of arcs generated from FOS 7E	52	53	1
54	12.0984369	12.2031146	Fixed point from 60M envelope of arcs generated from FOS 7E	53	54	1
55	12.1119179	12.2132004	Fixed point from 60M envelope of arcs generated from FOS 7E	54	55	1
56	12.1252325	12.2235153	Fixed point from 60M envelope of arcs generated from FOS 7E	55	56	1
57	12.1383740	12.2340525	Fixed point from 60M envelope of arcs generated from FOS 7E	56	57	1
58	12.1513403	12.2448144	Fixed point from 60M envelope of arcs generated from FOS 7E	57	58	1
59	12.1641293	12.2557940	Fixed point from 60M envelope of arcs generated from FOS 7E	58	59	1
60	12.1767364	12.2669893	Fixed point from 60M envelope of arcs generated from FOS 7E	59	60	1
61	12.1891551	12.2783979	Fixed point from 60M envelope of arcs generated from FOS 7E	60	61	1

62	12.2013877	12.2900176	Fixed point from 60M envelope of arcs generated from FOS 7E	61	62	1
63	12.2134253	12.3018417	Fixed point from 60M envelope of arcs generated from FOS 7E	62	63	1
64	12.2252680	12.3138701	Fixed point from 60M envelope of arcs generated from FOS 7E	63	64	1
65	12.2369113	12.3261007	Fixed point from 60M envelope of arcs generated from FOS 7E	64	65	1
66	12.2483531	12.3385244	Fixed point from 60M envelope of arcs generated from FOS 7E	65	66	1
67	12.2595868	12.3511435	Fixed point from 60M envelope of arcs generated from FOS 7E	66	67	1
68	12.2706123	12.3639512	Fixed point from 60M envelope of arcs generated from FOS 7E	67	68	1
69	12.2814254	12.3769453	Fixed point from 60M envelope of arcs generated from FOS 7E	68	69	1
70	12.2920239	12.3901236	Fixed point from 60M envelope of arcs generated from FOS 7E	69	70	1
71	12.3024055	12.4034793	Fixed point from 60M envelope of arcs generated from FOS 7E	70	71	1
72	12.3125658	12.4170102	Fixed point from 60M envelope of arcs generated from FOS 7E	71	72	1
73	12.3225005	12.4307117	Fixed point from 60M envelope of arcs generated from FOS 7E	72	73	1
74	12.3322096	12.4445817	Fixed point from 60M envelope of arcs generated from FOS 7E	73	74	1
75	12.3416910	12.4586134	Fixed point from 60M envelope of arcs generated from FOS 7E	74	75	1
76	12.3509379	12.4728068	Fixed point from 60M envelope of arcs generated from FOS 7E	75	76	1
77	12.3599505	12.4871551	Fixed point from 60M envelope of arcs generated from FOS 7E	76	77	1
78	12.3687287	12.5016562	Fixed point from 60M envelope of arcs generated from FOS 7E	77	78	1
79	12.3772638	12.5163032	Fixed point from 60M envelope of arcs generated from FOS 7E	78	79	1
80	12.3855602	12.5310962	Fixed point from 60M envelope of arcs generated from FOS 7E	79	80	1
81	12.3936090	12.5460262	Fixed point from 60M envelope of arcs generated from FOS 7E	80	81	1
82	12.4014148	12.5610932	Fixed point from 60M envelope of arcs generated from FOS 7E	81	82	1
83	12.4089687	12.5762905	Fixed point from 60M envelope of arcs generated from FOS 7E	82	83	1
84	12.4162730	12.5916157	Fixed point from 60M envelope of arcs generated from FOS 7E	83	84	1
85	12.4233254	12.6070622	Fixed point from 60M envelope of arcs generated from FOS 7E	84	85	1
86	12.4301216	12.6226278	Fixed point from 60M envelope of arcs generated from FOS 7E	85	86	1
87	12.4366616	12.6383057	Fixed point from 60M envelope of arcs generated from FOS 7E	86	87	1
88	12.4429431	12.6540958	Fixed point from 60M envelope of arcs generated from FOS 7E	87	88	1
89	12.4489641	12.6699892	Fixed point from 60M envelope of arcs generated from FOS 7E	88	89	1
90	12.4547223	12.6859837	Fixed point from 60M envelope of arcs generated from FOS 7E	89	90	1
91	12.9909196	13.5401221	Fixed point from 60M envelope of arcs generated from FOS 9E	90	91	59.455
92	13.7885745	13.5123238	Fixed point from 60M envelope of arcs generated from FOS 10E on 350M intersect	91	92	47.67
93	13.7889827	13.5150546	Fixed point on 350M constraint	92	93	0.16
94	13.7914608	13.5319632	Fixed point on 350M constraint	93	94	1
95	13.7938883	13.5488785	Fixed point on 350M constraint	94	95	1
96	13.7962698	13.5658027	Fixed point on 350M constraint	95	96	1
97	13.7986007	13.5827337	Fixed point on 350M constraint	96	97	1
98	13.8008855	13.5996714	Fixed point on 350M constraint	97	98	1
99	13.8031198	13.6166159	Fixed point on 350M constraint	98	99	1
100	13.8053080	13.6335671	Fixed point on 350M constraint	99	100	1
101	13.8074457	13.6505251	Fixed point on 350M constraint	100	101	1
102	13.8095373	13.6674898	Fixed point on 350M constraint	101	102	1
103	13.8115806	13.6844612	Fixed point on 350M constraint	102	103	1
104	13.8135734	13.7014393	Fixed point on 350M constraint	103	104	1
105	13.8155201	13.7184220	Fixed point on 350M constraint	104	105	1
106	13.8174185	13.7354114	Fixed point on 350M constraint	105	106	1
107	13.8192664	13.7524053	Fixed point on 350M constraint	106	107	1
108	13.8210681	13.7694059	Fixed point on 350M constraint	107	108	1
109	13.8228194	13.7864110	Fixed point on 350M constraint	108	109	1
110	13.8245225	13.8034228	Fixed point on 350M constraint	109	110	1
111	13.8261794	13.8204392	Fixed point on 350M constraint	110	111	1
112	13.8277858	13.8374600	Fixed point on 350M constraint	111	112	1
113	13.8293439	13.8544853	Fixed point on 350M constraint	112	113	1
114	13.8308538	13.8715174	Fixed point on 350M constraint	113	114	1
115	13.8323153	13.8885517	Fixed point on 350M constraint	114	115	1
116	13.8337286	13.9055905	Fixed point on 350M constraint	115	116	1
117	13.8350936	13.9226338	Fixed point on 350M constraint	116	117	1
118	13.8364102	13.9396838	Fixed point on 350M constraint	117	118	1
119	13.8376765	13.9567338	Fixed point on 350M constraint	118	119	1
120	13.8388966	13.9737906	Fixed point on 350M constraint	119	120	1
121	13.8400662	13.9908496	Fixed point on 350M constraint	120	121	1
122	13.8411876	14.0079131	Fixed point on 350M constraint	121	122	1
123	13.8422606	14.0249788	Fixed point on 350M constraint	122	123	1
124	13.8432854	14.0420468	Fixed point on 350M constraint	123	124	1
125	13.8442620	14.0591193	Fixed point on 350M constraint	124	125	1
126	13.8451902	14.0761963	Fixed point on 350M constraint	125	126	1
127	13.8460679	14.0932732	Fixed point on 350M constraint	126	127	1
128	13.8468996	14.1103547	Fixed point on 350M constraint	127	128	1
129	13.8476808	14.1274362	Fixed point on 350M constraint	128	129	1
130	13.8484137	14.1445221	Fixed point on 350M constraint	129	130	1

131	13.8490962	14.1616103	Fixed point on 350M constraint	130	131	1
132	13.8497325	14.1787008	Fixed point on 350M constraint	131	132	1
133	13.8503206	14.1957912	Fixed point on 350M constraint	132	133	1
134	13.8508582	14.2128839	Fixed point on 350M constraint	133	134	1
135	13.8513476	14.2299789	Fixed point on 350M constraint	134	135	1
136	13.8517886	14.2470760	Fixed point on 350M constraint	135	136	1
137	13.8521814	14.2641732	Fixed point on 350M constraint	136	137	1
138	13.8525237	14.2812704	Fixed point on 350M constraint	137	138	1
139	13.8528200	14.2983721	Fixed point on 350M constraint	138	139	1
140	13.8530657	14.3154715	Fixed point on 350M constraint	139	140	1
141	13.8532632	14.3325732	Fixed point on 350M constraint	140	141	1
142	13.8534124	14.3496749	Fixed point on 350M constraint	141	142	1
143	13.8535134	14.3667766	Fixed point on 350M constraint	142	143	1
144	13.8535638	14.3838782	Fixed point on 350M constraint	143	144	1
145	13.8535660	14.4009799	Fixed point on 350M constraint	144	145	1
146	13.8535199	14.4180838	Fixed point on 350M constraint	145	146	1
147	13.8534256	14.4351855	Fixed point on 350M constraint	146	147	1
148	13.8532830	14.4522872	Fixed point on 350M constraint	147	148	1
149	13.8530899	14.4693866	Fixed point on 350M constraint	148	149	1
150	13.8528507	14.4864883	Fixed point on 350M constraint	149	150	1
151	13.8525610	14.5035877	Fixed point on 350M constraint	150	151	1
152	13.8522231	14.5206872	Fixed point on 350M constraint	151	152	1
153	13.8518369	14.5377843	Fixed point on 350M constraint	152	153	1
154	13.8514002	14.5548815	Fixed point on 350M constraint	153	154	1
155	13.8509175	14.5719765	Fixed point on 350M constraint	154	155	1
156	13.8503842	14.5890692	Fixed point on 350M constraint	155	156	1
157	13.8498027	14.6061596	Fixed point on 350M constraint	156	157	1
158	13.8491730	14.6232501	Fixed point on 350M constraint	157	158	1
159	13.8484949	14.6403383	Fixed point on 350M constraint	158	159	1
160	13.8477664	14.6574242	Fixed point on 350M constraint	159	160	1
161	13.8469918	14.6745079	Fixed point on 350M constraint	160	161	1
162	13.8461667	14.6915871	Fixed point on 350M constraint	161	162	1
163	13.8452933	14.7086664	Fixed point on 350M constraint	162	163	1
164	13.8443717	14.7257411	Fixed point on 350M constraint	163	164	1
165	13.8434017	14.7428158	Fixed point on 350M constraint	164	165	1
166	13.8423813	14.7598838	Fixed point on 350M constraint	165	166	1
167	13.8413148	14.7769518	Fixed point on 350M constraint	166	167	1
168	13.8401979	14.7940153	Fixed point on 350M constraint	167	168	1
169	13.8390326	14.8110743	Fixed point on 350M constraint	168	169	1
170	13.8378191	14.8281288	Fixed point on 350M constraint	169	170	1
171	13.8367548	14.8425760	Fixed point on 350M constraint	170	171	1
172	13.8364234	14.8469755	Fixed point on 350M constraint	171	172	1
173	13.8351133	14.8640255	Fixed point on 350M constraint	172	173	1
174	13.8337549	14.8810688	Fixed point on 350M constraint	173	174	1
175	13.8323460	14.8981098	Fixed point on 350M constraint	174	175	1
176	13.8308911	14.9151441	Fixed point on 350M constraint	175	176	1
177	13.8293856	14.9321762	Fixed point on 350M constraint	176	177	1
178	13.8278341	14.9492015	Fixed point on 350M constraint	177	178	1
179	13.8262320	14.9662246	Fixed point on 350M constraint	178	179	1
180	13.8245817	14.9832409	Fixed point on 350M constraint	179	180	1
181	13.8228831	15.0002528	Fixed point on 350M constraint	180	181	1
182	13.8211362	15.0172579	Fixed point on 350M constraint	181	182	1
183	13.8193410	15.0342585	Fixed point on 350M constraint	182	183	1
184	13.8174975	15.0512546	Fixed point on 350M constraint	183	184	1
185	13.8156057	15.0682440	Fixed point on 350M constraint	184	185	1
186	13.8136656	15.0852289	Fixed point on 350M constraint	185	186	1
187	13.8116772	15.1022048	Fixed point on 350M constraint	186	187	1
188	13.8108607	15.1090567	Fixed point on 350M constraint	187	188	1
189	13.8088416	15.1258799	Fixed point on 350M constraint	188	189	1
190	13.8067566	15.1428468	Fixed point on 350M constraint	189	190	1
191	13.8046232	15.1598048	Fixed point on 350M constraint	190	191	1
192	13.8024416	15.1767582	Fixed point on 350M constraint	191	192	1
193	13.8002117	15.1937027	Fixed point on 350M constraint	192	193	1
194	13.7979335	15.2106427	Fixed point on 350M constraint	193	194	1
195	13.7956069	15.2275737	Fixed point on 350M constraint	194	195	1
196	13.7932321	15.2444980	Fixed point on 350M constraint	195	196	1
197	13.7908089	15.2614155	Fixed point on 350M constraint	196	197	1
198	13.7883374	15.2783240	Fixed point on 350M constraint	197	198	1
199	13.7858176	15.2952258	Fixed point on 350M constraint	198	199	1
200	13.7832517	15.3121209	Fixed point on 350M constraint	199	200	1

201	13.7806352	15.3290070	Fixed point on 350M constraint	200	201	1
202	13.7779727	15.3458863	Fixed point on 350M constraint	201	202	1
203	13.7752618	15.3627567	Fixed point on 350M constraint	202	203	1
204	13.7725026	15.3796181	Fixed point on 350M constraint	203	204	1
205	13.7696951	15.3964704	Fixed point on 350M constraint	204	205	1
206	13.7668392	15.4133161	Fixed point on 350M constraint	205	206	1
207	13.7639350	15.4301505	Fixed point on 350M constraint	206	207	1
208	13.7609847	15.4469782	Fixed point on 350M constraint	207	208	1
209	13.7579860	15.4637969	Fixed point on 350M constraint	208	209	1
210	13.7549390	15.4806044	Fixed point on 350M constraint	209	210	1
211	13.7518437	15.4974029	Fixed point on 350M constraint	210	211	1
212	13.7487001	15.5141947	Fixed point on 350M constraint	211	212	1
213	13.7455102	15.5309729	Fixed point on 350M constraint	212	213	1
214	13.7422721	15.5477445	Fixed point on 350M constraint	213	214	1
215	13.7389856	15.5645048	Fixed point on 350M constraint	214	215	1
216	13.7356529	15.5812539	Fixed point on 350M constraint	215	216	1
217	13.7322719	15.5979940	Fixed point on 350M constraint	216	217	1
218	13.7288426	15.6147251	Fixed point on 350M constraint	217	218	1
219	13.7253671	15.6314428	Fixed point on 350M constraint	218	219	1
220	13.7218432	15.6481514	Fixed point on 350M constraint	219	220	1
221	13.7182710	15.6648489	Fixed point on 350M constraint	220	221	1
222	13.7146526	15.6815351	Fixed point on 350M constraint	221	222	1
223	13.7109859	15.6982123	Fixed point on 350M constraint	222	223	1
224	13.7072708	15.7148761	Fixed point on 350M constraint	223	224	1
225	13.7035095	15.7315286	Fixed point on 350M constraint	224	225	1
226	13.6997021	15.7481699	Fixed point on 350M constraint	225	226	1
227	13.6958441	15.7647999	Fixed point on 350M constraint	226	227	1
228	13.6919421	15.7814188	Fixed point on 350M constraint	227	228	1
229	13.6879917	15.7980241	Fixed point on 350M constraint	228	229	1
230	13.6839930	15.8146182	Fixed point on 350M constraint	229	230	1
231	13.6799480	15.8311989	Fixed point on 350M constraint	230	231	1
232	13.6758547	15.8477683	Fixed point on 350M constraint	231	232	1
233	13.6717152	15.8643243	Fixed point on 350M constraint	232	233	1
234	13.6675295	15.8808690	Fixed point on 350M constraint	233	234	1
235	13.6632955	15.8974002	Fixed point on 350M constraint	234	235	1
236	13.6590152	15.9139180	Fixed point on 350M constraint	235	236	1
237	13.6546865	15.9304223	Fixed point on 350M constraint	236	237	1
238	13.6503116	15.9469154	Fixed point on 350M constraint	237	238	1
239	13.6458906	15.9633927	Fixed point on 350M constraint	238	239	1
240	13.6414211	15.9798566	Fixed point on 350M constraint	239	240	1
241	13.6369076	15.9963092	Fixed point on 350M constraint	240	241	1
242	13.6323435	16.0127462	Fixed point on 350M constraint	241	242	1
243	13.6277354	16.0291696	Fixed point on 350M constraint	242	243	1
244	13.6230788	16.0455796	Fixed point on 350M constraint	243	244	1
245	13.6183783	16.0619738	Fixed point on 350M constraint	244	245	1
246	13.6136293	16.0783546	Fixed point on 350M constraint	245	246	1
247	13.6088341	16.0947197	Fixed point on 350M constraint	246	247	1
248	13.6039905	16.1110713	Fixed point on 350M constraint	247	248	1
249	13.5991028	16.1274094	Fixed point on 350M constraint	248	249	1
250	13.5941667	16.1437295	Fixed point on 350M constraint	249	250	1
251	13.5891866	16.1600362	Fixed point on 350M constraint	250	251	1
252	13.5841580	16.1763294	Fixed point on 350M constraint	251	252	1
253	13.5790832	16.1926046	Fixed point on 350M constraint	252	253	1
254	13.5739621	16.2088641	Fixed point on 350M constraint	253	254	1
255	13.5687970	16.2251102	Fixed point on 350M constraint	254	255	1
256	13.5635835	16.2413382	Fixed point on 350M constraint	255	256	1
257	13.5583237	16.2575528	Fixed point on 350M constraint	256	257	1
258	13.5530198	16.2737494	Fixed point on 350M constraint	257	258	1
259	13.5476674	16.2899303	Fixed point on 350M constraint	258	259	1
260	13.5422710	16.3060955	Fixed point on 350M constraint	259	260	1
261	13.5368262	16.3222427	Fixed point on 350M constraint	260	261	1
262	13.5313372	16.3383742	Fixed point on 350M constraint	261	262	1
263	13.5258020	16.3544900	Fixed point on 350M constraint	262	263	1
264	13.5202227	16.3705878	Fixed point on 350M constraint	263	264	1
265	13.5145950	16.3866677	Fixed point on 350M constraint	264	265	1
266	13.5089231	16.4027318	Fixed point on 350M constraint	265	266	1
267	13.5032050	16.4187779	Fixed point on 350M constraint	266	267	1
268	13.4974405	16.4348061	Fixed point on 350M constraint	267	268	1
269	13.4916320	16.4508186	Fixed point on 350M constraint	268	269	1
270	13.4857772	16.4668109	Fixed point on 350M constraint	269	270	1

271	13.4798760	16.4827874	Fixed point on 350M constraint	270	271	1
272	13.4739308	16.4987437	Fixed point on 350M constraint	271	272	1
273	13.4679393	16.5146843	Fixed point on 350M constraint	272	273	1
274	13.4619014	16.5306047	Fixed point on 350M constraint	273	274	1
275	13.4558195	16.5465094	Fixed point on 350M constraint	274	275	1
276	13.4496934	16.5623939	Fixed point on 350M constraint	275	276	1
277	13.4435210	16.5782581	Fixed point on 350M constraint	276	277	1
278	13.4373044	16.5941066	Fixed point on 350M constraint	277	278	1
279	13.4310416	16.6099349	Fixed point on 350M constraint	278	279	1
280	13.4247346	16.6257430	Fixed point on 350M constraint	279	280	1
281	13.4183813	16.6415332	Fixed point on 350M constraint	280	281	1
282	13.4119838	16.6573031	Fixed point on 350M constraint	281	282	1
283	13.4055422	16.6730528	Fixed point on 350M constraint	282	283	1
284	13.3990565	16.6887846	Fixed point on 350M constraint	283	284	1
285	13.3925244	16.7044961	Fixed point on 350M constraint	284	285	1
286	13.3859481	16.7201874	Fixed point on 350M constraint	285	286	1
287	13.3793277	16.7358608	Fixed point on 350M constraint	286	287	1
288	13.3726609	16.7515117	Fixed point on 350M constraint	287	288	1
289	13.3659522	16.7671424	Fixed point on 350M constraint	288	289	1
290	13.3591971	16.7827528	Fixed point on 350M constraint	289	290	1
291	13.3523978	16.7983431	Fixed point on 350M constraint	290	291	1
292	13.3455544	16.8139131	Fixed point on 350M constraint	291	292	1
293	13.3386689	16.8294630	Fixed point on 350M constraint	292	293	1
294	13.3317371	16.8449904	Fixed point on 350M constraint	293	294	1
295	13.3247611	16.8604975	Fixed point on 350M constraint	294	295	1
296	13.3177409	16.8759822	Fixed point on 350M constraint	295	296	1
297	13.3106765	16.8914467	Fixed point on 350M constraint	296	297	1
298	13.3035701	16.9068888	Fixed point on 350M constraint	297	298	1
299	13.2964174	16.9223106	Fixed point on 350M constraint	298	299	1
300	13.2892226	16.9377100	Fixed point on 350M constraint	299	300	1
301	13.2819836	16.9530891	Fixed point on 350M constraint	300	301	1
302	13.2747003	16.9684436	Fixed point on 350M constraint	301	302	1
303	13.2673729	16.9837778	Fixed point on 350M constraint	302	303	1
304	13.2600035	16.9990896	Fixed point on 350M constraint	303	304	1
305	13.2525898	17.0143767	Fixed point on 350M constraint	304	305	1
306	13.2451319	17.0296436	Fixed point on 350M constraint	305	306	1
307	13.2376319	17.0448880	Fixed point on 350M constraint	306	307	1
308	13.2300878	17.0601099	Fixed point on 350M constraint	307	308	1
309	13.2225015	17.0753072	Fixed point on 350M constraint	308	309	1
310	13.2148711	17.0904820	Fixed point on 350M constraint	309	310	1
311	13.2071964	17.1056343	Fixed point on 350M constraint	310	311	1
312	13.1994796	17.1207619	Fixed point on 350M constraint	311	312	1
313	13.1917208	17.1358693	Fixed point on 350M constraint	312	313	1
314	13.1839177	17.1509498	Fixed point on 350M constraint	313	314	1
315	13.1760726	17.1660078	Fixed point on 350M constraint	314	315	1
316	13.1681853	17.1810434	Fixed point on 350M constraint	315	316	1
317	13.1602539	17.1960520	Fixed point on 350M constraint	316	317	1
318	13.1522803	17.2110404	Fixed point on 350M constraint	317	318	1
319	13.1442647	17.2260018	Fixed point on 350M constraint	318	319	1
320	13.1362069	17.2409385	Fixed point on 350M constraint	319	320	1
321	13.1281049	17.2558528	Fixed point on 350M constraint	320	321	1
322	13.1199608	17.2707424	Fixed point on 350M constraint	321	322	1
323	13.1117768	17.2856073	Fixed point on 350M constraint	322	323	1
324	13.1035485	17.3004452	Fixed point on 350M constraint	323	324	1
325	13.0952781	17.3152607	Fixed point on 350M constraint	324	325	1
326	13.0869656	17.3300514	Fixed point on 350M constraint	325	326	1
327	13.0786109	17.3448152	Fixed point on 350M constraint	326	327	1
328	13.0702142	17.3595543	Fixed point on 350M constraint	327	328	1
329	13.0617775	17.3742687	Fixed point on 350M constraint	328	329	1
330	13.0532965	17.3889562	Fixed point on 350M constraint	329	330	1
331	13.0447756	17.4036190	Fixed point on 350M constraint	330	331	1
332	13.0362126	17.4182570	Fixed point on 350M constraint	331	332	1
333	13.0276074	17.4328659	Fixed point on 350M constraint	332	333	1
334	13.0189600	17.4474522	Fixed point on 350M constraint	333	334	1
335	13.0102727	17.4620117	Fixed point on 350M constraint	334	335	1
336	13.0015433	17.4765442	Fixed point on 350M constraint	335	336	1
337	12.9927739	17.4910497	Fixed point on 350M constraint	336	337	1
338	12.9839624	17.5055283	Fixed point on 350M constraint	337	338	1
339	12.9751087	17.5199822	Fixed point on 350M constraint	338	339	1
340	12.9662150	17.5344092	Fixed point on 350M constraint	339	340	1

341	12.9572792	17.5488069	Fixed point on 350M constraint	340	341	1
342	12.9483034	17.5631800	Fixed point on 350M constraint	341	342	1
343	12.9392876	17.5775261	Fixed point on 350M constraint	342	343	1
344	12.9302296	17.5918430	Fixed point on 350M constraint	343	344	1
345	12.9211316	17.6061352	Fixed point on 350M constraint	344	345	1
346	12.9119937	17.6203982	Fixed point on 350M constraint	345	346	1
347	12.9028135	17.6346342	Fixed point on 350M constraint	346	347	1
348	12.8935956	17.6488411	Fixed point on 350M constraint	347	348	1
349	12.8843354	17.6630232	Fixed point on 350M constraint	348	349	1
350	12.8750353	17.6771739	Fixed point on 350M constraint	349	350	1
351	12.8656951	17.6912999	Fixed point on 350M constraint	350	351	1
352	12.8563149	17.7053945	Fixed point on 350M constraint	351	352	1
353	12.8468925	17.7194621	Fixed point on 350M constraint	352	353	1
354	12.8374323	17.7335028	Fixed point on 350M constraint	353	354	1
355	12.8279321	17.7475143	Fixed point on 350M constraint	354	355	1
356	12.8183918	17.7614965	Fixed point on 350M constraint	355	356	1
357	12.8088136	17.7754496	Fixed point on 350M constraint	356	357	1
358	12.7991933	17.7893735	Fixed point on 350M constraint	357	358	1
359	12.7895351	17.8032704	Fixed point on 350M constraint	358	359	1
360	12.7798368	17.8171359	Fixed point on 350M constraint	359	360	1
361	12.7700985	17.8309745	Fixed point on 350M constraint	360	361	1
362	12.7603201	17.8447816	Fixed point on 350M constraint	361	362	1
363	12.7505039	17.8585617	Fixed point on 350M constraint	362	363	1
364	12.7406498	17.8723105	Fixed point on 350M constraint	363	364	1
365	12.7307534	17.8860300	Fixed point on 350M constraint	364	365	1
366	12.7208214	17.8997203	Fixed point on 350M constraint	365	366	1
367	12.7108493	17.9133792	Fixed point on 350M constraint	366	367	1
368	12.7008371	17.9270089	Fixed point on 350M constraint	367	368	1
369	12.6907870	17.9406094	Fixed point on 350M constraint	368	369	1
370	12.6806991	17.9541784	Fixed point on 350M constraint	369	370	1
371	12.6705732	17.9677183	Fixed point on 350M constraint	370	371	1
372	12.6604072	17.9812267	Fixed point on 350M constraint	371	372	1
373	12.6502034	17.9947037	Fixed point on 350M constraint	372	373	1
374	12.6399616	18.0081515	Fixed point on 350M constraint	373	374	1
375	12.6296819	18.0215700	Fixed point on 350M constraint	374	375	1
376	12.6193621	18.0349549	Fixed point on 350M constraint	375	376	1
377	12.6090066	18.0483106	Fixed point on 350M constraint	376	377	1
378	12.5986132	18.0616349	Fixed point on 350M constraint	377	378	1
379	12.5881796	18.0749255	Fixed point on 350M constraint	378	379	1
380	12.5777103	18.0881869	Fixed point on 350M constraint	379	380	1
381	12.5672031	18.1014168	Fixed point on 350M constraint	380	381	1
382	12.5566579	18.1146153	Fixed point on 350M constraint	381	382	1
383	12.5460748	18.1277823	Fixed point on 350M constraint	382	383	1
384	12.5354560	18.1409180	Fixed point on 350M constraint	383	384	1
385	12.5247992	18.1540199	Fixed point on 350M constraint	384	385	1
386	12.5141044	18.1670926	Fixed point on 350M constraint	385	386	1
387	12.5033739	18.1801317	Fixed point on 350M constraint	386	387	1
388	12.4926054	18.1931370	Fixed point on 350M constraint	387	388	1
389	12.4817989	18.2061132	Fixed point on 350M constraint	388	389	1
390	12.4709567	18.2190557	Fixed point on 350M constraint	389	390	1
391	12.4600787	18.2319645	Fixed point on 350M constraint	390	391	1
392	12.4491628	18.2448418	Fixed point on 350M constraint	391	392	1
393	12.4382110	18.2576855	Fixed point on 350M constraint	392	393	1
394	12.4272235	18.2704977	Fixed point on 350M constraint	393	394	1
395	12.4161979	18.2832762	Fixed point on 350M constraint	394	395	1
396	12.4051366	18.2960233	Fixed point on 350M constraint	395	396	1
397	12.3940395	18.3087345	Fixed point on 350M constraint	396	397	1
398	12.3829066	18.3214142	Fixed point on 350M constraint	397	398	1
399	12.3717357	18.3340602	Fixed point on 350M constraint	398	399	1
400	12.3605311	18.3466726	Fixed point on 350M constraint	399	400	1
401	12.3492908	18.3592512	Fixed point on 350M constraint	400	401	1
402	12.3380146	18.3717985	Fixed point on 350M constraint	401	402	1
403	12.3267004	18.3843098	Fixed point on 350M constraint	402	403	1
404	12.3153548	18.3967873	Fixed point on 350M constraint	403	404	1
405	12.3039712	18.4092313	Fixed point on 350M constraint	404	405	1
406	12.2925517	18.4216415	Fixed point on 350M constraint	405	406	1
407	12.2810986	18.4340180	Fixed point on 350M constraint	406	407	1
408	12.2696096	18.4463586	Fixed point on 350M constraint	407	408	1
409	12.2580848	18.4586656	Fixed point on 350M constraint	408	409	1
410	12.2465264	18.4709388	Fixed point on 350M constraint	409	410	1

411	12.2349343	18.4831783	Fixed point on 350M constraint	410	411	1
412	12.2233042	18.4953819	Fixed point on 350M constraint	411	412	1
413	12.2116426	18.5075496	Fixed point on 350M constraint	412	413	1
414	12.1999451	18.5196859	Fixed point on 350M constraint	413	414	1
415	12.1882140	18.5317839	Fixed point on 350M constraint	414	415	1
416	12.1764470	18.5438483	Fixed point on 350M constraint	415	416	1
417	12.1646463	18.5558767	Fixed point on 350M constraint	416	417	1
418	12.1528119	18.5678715	Fixed point on 350M constraint	417	418	1
419	12.1409439	18.5798303	Fixed point on 350M constraint	418	419	1
420	12.1290400	18.5917532	Fixed point on 350M constraint	419	420	1
421	12.1171046	18.6036424	Fixed point on 350M constraint	420	421	1
422	12.1051355	18.6154934	Fixed point on 350M constraint	421	422	1
423	12.0931305	18.6273108	Fixed point on 350M constraint	422	423	1
424	12.0810940	18.6390922	Fixed point on 350M constraint	423	424	1
425	12.0690238	18.6508354	Fixed point on 350M constraint	424	425	1
426	12.0569200	18.6625449	Fixed point on 350M constraint	425	426	1
427	12.0447823	18.6742186	Fixed point on 350M constraint	426	427	1
428	12.0326132	18.6858540	Fixed point on 350M constraint	427	428	1
429	12.0204104	18.6974557	Fixed point on 350M constraint	428	429	1
430	12.0081739	18.7090193	Fixed point on 350M constraint	429	430	1
431	11.9959036	18.7205469	Fixed point on 350M constraint	430	431	1
432	11.9836040	18.7320386	Fixed point on 350M constraint	431	432	1
433	11.9712685	18.7434944	Fixed point on 350M constraint	432	433	1
434	11.9589014	18.7549120	Fixed point on 350M constraint	433	434	1
435	11.9465028	18.7662936	Fixed point on 350M constraint	434	435	1
436	11.9340727	18.7776371	Fixed point on 350M constraint	435	436	1
437	11.9216089	18.7889446	Fixed point on 350M constraint	436	437	1
438	11.9091134	18.8002140	Fixed point on 350M constraint	437	438	1
439	11.8965865	18.8114474	Fixed point on 350M constraint	438	439	1
440	11.8840258	18.8226427	Fixed point on 350M constraint	439	440	1
441	11.8714357	18.8338020	Fixed point on 350M constraint	440	441	1
442	11.8588119	18.8449232	Fixed point on 350M constraint	441	442	1
443	11.8461587	18.8560084	Fixed point on 350M constraint	442	443	1
444	11.8334739	18.8670532	Fixed point on 350M constraint	443	444	1
445	11.8207554	18.8780620	Fixed point on 350M constraint	444	445	1
446	11.8119921	18.8856348	Fixed point on 350M constraint	445	446	1
447	11.7992438	18.8966032	Fixed point on 350M constraint	446	447	1
448	11.7864639	18.9075380	Fixed point on 350M constraint	447	448	1
449	11.7736547	18.9184323	Fixed point on 350M constraint	448	449	1
450	11.7608138	18.9292884	Fixed point on 350M constraint	449	450	1
451	11.7479414	18.9401064	Fixed point on 350M constraint	450	451	1
452	11.7350396	18.9508884	Fixed point on 350M constraint	451	452	1
453	11.7221062	18.9616300	Fixed point on 350M constraint	452	453	1
454	11.7091434	18.9723335	Fixed point on 350M constraint	453	454	1
455	11.6961491	18.9829987	Fixed point on 350M constraint	454	455	1
456	11.6831253	18.9936258	Fixed point on 350M constraint	455	456	1
457	11.6759048	18.9994895	Fixed point on 350M constraint	456	457	1
458	11.6629664	19.0099863	Fixed point on 350M constraint	457	458	1
459	11.6498813	19.0205348	Fixed point on 350M constraint	458	459	1
460	11.6367668	19.0310473	Fixed point on 350M constraint	459	460	1
461	11.6236228	19.0415195	Fixed point on 350M constraint	460	461	1
462	11.6104495	19.0519511	Fixed point on 350M constraint	461	462	1
463	11.5972467	19.0623447	Fixed point on 350M constraint	462	463	1
464	11.5840145	19.0727000	Fixed point on 350M constraint	463	464	1
465	11.5707529	19.0830171	Fixed point on 350M constraint	464	465	1
466	11.5574619	19.0932939	Fixed point on 350M constraint	465	466	1
467	11.5441414	19.1035302	Fixed point on 350M constraint	466	467	1
468	11.5307938	19.1137283	Fixed point on 350M constraint	467	468	1
469	11.5174144	19.1238860	Fixed point on 350M constraint	468	469	1
470	11.5040079	19.1340055	Fixed point on 350M constraint	469	470	1
471	11.4905719	19.1440846	Fixed point on 350M constraint	470	471	1
472	11.4771087	19.1541233	Fixed point on 350M constraint	471	472	1
473	11.4636160	19.1641238	Fixed point on 350M constraint	472	473	1
474	11.4500961	19.1740838	Fixed point on 350M constraint	473	474	1
475	11.4365467	19.1840035	Fixed point on 350M constraint	474	475	1
476	11.4229701	19.1938827	Fixed point on 350M constraint	475	476	1
477	11.4093641	19.2037238	Fixed point on 350M constraint	476	477	1
478	11.3957308	19.2135221	Fixed point on 350M constraint	477	478	1
479	11.3820702	19.2232823	Fixed point on 350M constraint	478	479	1
480	11.3683824	19.2329999	Fixed point on 350M constraint	479	480	1

481	11.3546651	19.2426792	Fixed point on 350M constraint	480	481	1
482	11.3409227	19.2523181	Fixed point on 350M constraint	481	482	1
483	11.3271509	19.2619144	Fixed point on 350M constraint	482	483	1
484	11.3133540	19.2714725	Fixed point on 350M constraint	483	484	1
485	11.2995298	19.2809879	Fixed point on 350M constraint	484	485	1
486	11.2856762	19.2904628	Fixed point on 350M constraint	485	486	1
487	11.2717975	19.2998996	Fixed point on 350M constraint	486	487	1
488	11.2578937	19.3092915	Fixed point on 350M constraint	487	488	1
489	11.2439605	19.3186452	Fixed point on 350M constraint	488	489	1
490	11.2300021	19.3279563	Fixed point on 350M constraint	489	490	1
491	11.2160165	19.3372269	Fixed point on 350M constraint	490	491	1
492	11.2020058	19.3464571	Fixed point on 350M constraint	491	492	1
493	11.1879700	19.3556446	Fixed point on 350M constraint	492	493	1
494	11.1739047	19.3647917	Fixed point on 350M constraint	493	494	1
495	11.1598165	19.3738984	Fixed point on 350M constraint	494	495	1
496	11.1457011	19.3829624	Fixed point on 350M constraint	495	496	1
497	11.1315605	19.3919837	Fixed point on 350M constraint	496	497	1
498	11.1173948	19.4009646	Fixed point on 350M constraint	497	498	1
499	11.1032019	19.4099051	Fixed point on 350M constraint	498	499	1
500	11.0889860	19.4188006	Fixed point on 350M constraint	499	500	1
501	11.0747429	19.4276580	Fixed point on 350M constraint	500	501	1
502	11.0604768	19.4364705	Fixed point on 350M constraint	501	502	1
503	11.0461834	19.4452426	Fixed point on 350M constraint	502	503	1
504	11.0318671	19.4539719	Fixed point on 350M constraint	503	504	1
505	11.0175258	19.4626609	Fixed point on 350M constraint	504	505	1
506	11.0031593	19.4713049	Fixed point on 350M constraint	505	506	1
507	10.9887676	19.4799085	Fixed point on 350M constraint	506	507	1
508	10.9743531	19.4884695	Fixed point on 350M constraint	507	508	1
509	10.9599135	19.4969900	Fixed point on 350M constraint	508	509	1
510	10.9454487	19.5054656	Fixed point on 350M constraint	509	510	1
511	10.9309633	19.5138986	Fixed point on 350M constraint	510	511	1
512	10.9164505	19.5222911	Fixed point on 350M constraint	511	512	1
513	10.9019147	19.5306387	Fixed point on 350M constraint	512	513	1
514	10.8873561	19.5389458	Fixed point on 350M constraint	513	514	1
515	10.8727745	19.5472103	Fixed point on 350M constraint	514	515	1
516	10.8581678	19.5554299	Fixed point on 350M constraint	515	516	1
517	10.8435404	19.5636091	Fixed point on 350M constraint	516	517	1
518	10.8288879	19.5717433	Fixed point on 350M constraint	517	518	1
519	10.8142124	19.5798349	Fixed point on 350M constraint	518	519	1
520	10.7995140	19.5878838	Fixed point on 350M constraint	519	520	1
521	10.7847927	19.5958900	Fixed point on 350M constraint	520	521	1
522	10.7700506	19.6038536	Fixed point on 350M constraint	521	522	1
523	10.7552834	19.6117722	Fixed point on 350M constraint	522	523	1
524	10.7404955	19.6196482	Fixed point on 350M constraint	523	524	1
525	10.7256846	19.6274815	Fixed point on 350M constraint	524	525	1
526	10.7108530	19.6352722	Fixed point on 350M constraint	525	526	1
527	10.6959962	19.6430179	Fixed point on 350M constraint	526	527	1
528	10.6811210	19.6507210	Fixed point on 350M constraint	527	528	1
529	10.6662205	19.6583813	Fixed point on 350M constraint	528	529	1
530	10.6513016	19.6659968	Fixed point on 350M constraint	529	530	1
531	10.6363596	19.6735674	Fixed point on 350M constraint	530	531	1
532	10.6213948	19.6810975	Fixed point on 350M constraint	531	532	1
533	10.6064114	19.6885804	Fixed point on 350M constraint	532	533	1
534	10.5914050	19.6960230	Fixed point on 350M constraint	533	534	1
535	10.5763779	19.7034184	Fixed point on 350M constraint	534	535	1
536	10.5613301	19.7107733	Fixed point on 350M constraint	535	536	1
537	10.5462615	19.7180811	Fixed point on 350M constraint	536	537	1
538	10.5311722	19.7253462	Fixed point on 350M constraint	537	538	1
539	10.5160643	19.7325665	Fixed point on 350M constraint	538	539	1
540	10.5009335	19.7397440	Fixed point on 350M constraint	539	540	1
541	10.4857819	19.7468766	Fixed point on 350M constraint	540	541	1
542	10.4706118	19.7539666	Fixed point on 350M constraint	541	542	1
543	10.4554209	19.7610094	Fixed point on 350M constraint	542	543	1
544	10.4402093	19.7680095	Fixed point on 350M constraint	543	544	1
545	10.4249791	19.7749647	Fixed point on 350M constraint	544	545	1
546	10.4097304	19.7818750	Fixed point on 350M constraint	545	546	1
547	10.3944609	19.7887426	Fixed point on 350M constraint	546	547	1
548	10.3791706	19.7955653	Fixed point on 350M constraint	547	548	1
549	10.3638618	19.8023431	Fixed point on 350M constraint	548	549	1
550	10.3485345	19.8090760	Fixed point on 350M constraint	549	550	1

551	10.3331886	19.8157639	Fixed point on 350M constraint	550	551	1
552	10.3178219	19.8224070	Fixed point on 350M constraint	551	552	1
553	10.3024389	19.8290051	Fixed point on 350M constraint	552	553	1
554	10.2870351	19.8355583	Fixed point on 350M constraint	553	554	1
555	10.2716150	19.8420688	Fixed point on 350M constraint	554	555	1
556	10.2561741	19.8485322	Fixed point on 350M constraint	555	556	1
557	10.2407169	19.8549507	Fixed point on 350M constraint	556	557	1
558	10.2252389	19.8613242	Fixed point on 350M constraint	557	558	1
559	10.2097446	19.8676529	Fixed point on 350M constraint	558	559	1
560	10.1942339	19.8739388	Fixed point on 350M constraint	559	560	1
561	10.1787024	19.8801776	Fixed point on 350M constraint	560	561	1
562	10.1631546	19.8863693	Fixed point on 350M constraint	561	562	1
563	10.1475905	19.8925182	Fixed point on 350M constraint	562	563	1
564	10.1320078	19.8986223	Fixed point on 350M constraint	563	564	1
565	10.1164087	19.9046792	Fixed point on 350M constraint	564	565	1
566	10.1007911	19.9106911	Fixed point on 350M constraint	565	566	1
567	10.0851571	19.9166582	Fixed point on 350M constraint	566	567	1
568	10.0695068	19.9225804	Fixed point on 350M constraint	567	568	1
569	10.0538379	19.9284576	Fixed point on 350M constraint	568	569	1
570	10.0381548	19.9342876	Fixed point on 350M constraint	569	570	1
571	10.0224532	19.9400728	Fixed point on 350M constraint	570	571	1
572	10.0067375	19.9458108	Fixed point on 350M constraint	571	572	1
573	9.9910032	19.9515061	Fixed point on 350M constraint	572	573	1
574	9.9752547	19.9571543	Fixed point on 350M constraint	573	574	1
575	9.9594899	19.9627553	Fixed point on 350M constraint	574	575	1
576	9.9437088	19.9683136	Fixed point on 350M constraint	575	576	1
577	9.9279113	19.9738225	Fixed point on 350M constraint	576	577	1
578	9.9120996	19.9792887	Fixed point on 350M constraint	577	578	1
579	9.8962716	19.9847078	Fixed point on 350M constraint	578	579	1
580	9.8804295	19.9900798	Fixed point on 350M constraint	579	580	1
581	9.8645710	19.9954090	Fixed point on 350M constraint	580	581	1
582	9.8486961	20.0006889	Fixed point on 350M constraint	581	582	1
583	9.8328093	20.0059238	Fixed point on 350M constraint	582	583	1
584	9.8169062	20.0111138	Fixed point on 350M constraint	583	584	1
585	9.8009889	20.0162567	Fixed point on 350M constraint	584	585	1
586	9.7850553	20.0213546	Fixed point on 350M constraint	585	586	1
587	9.7691097	20.0264054	Fixed point on 350M constraint	586	587	1
588	9.7531478	20.0314090	Fixed point on 350M constraint	587	588	1
589	9.7371739	20.0363677	Fixed point on 350M constraint	588	589	1
590	9.7211860	20.0412792	Fixed point on 350M constraint	589	590	1
591	9.7051816	20.0461459	Fixed point on 350M constraint	590	591	1
592	9.6891653	20.0509653	Fixed point on 350M constraint	591	592	1
593	9.6731349	20.0557376	Fixed point on 350M constraint	592	593	1
594	9.6570926	20.0604650	Fixed point on 350M constraint	593	594	1
595	9.6410339	20.0651452	Fixed point on 350M constraint	594	595	1
596	9.6249655	20.0697805	Fixed point on 350M constraint	595	596	1
597	9.6088807	20.0743664	Fixed point on 350M constraint	596	597	1
598	9.5927840	20.0789074	Fixed point on 350M constraint	597	598	1
599	9.5766754	20.0834035	Fixed point on 350M constraint	598	599	1
600	9.5605549	20.0878502	Fixed point on 350M constraint	599	600	1
601	9.5444202	20.0922519	Fixed point on 350M constraint	600	601	1
602	9.5282736	20.0966065	Fixed point on 350M constraint	601	602	1
603	9.5121151	20.1009139	Fixed point on 350M constraint	602	603	1
604	9.4959424	20.1051764	Fixed point on 350M constraint	603	604	1
605	9.4797600	20.1093895	Fixed point on 350M constraint	604	605	1
606	9.4635635	20.1135577	Fixed point on 350M constraint	605	606	1
607	9.4473573	20.1176787	Fixed point on 350M constraint	606	607	1
608	9.4311392	20.1217526	Fixed point on 350M constraint	607	608	1
609	9.4149091	20.1257815	Fixed point on 350M constraint	608	609	1
610	9.3986672	20.1297611	Fixed point on 350M constraint	609	610	1
611	9.3824155	20.1336957	Fixed point on 350M constraint	610	611	1
612	9.3661519	20.1375809	Fixed point on 350M constraint	611	612	1
613	9.3498764	20.1414212	Fixed point on 350M constraint	612	613	1
614	9.3335912	20.1452143	Fixed point on 350M constraint	613	614	1
615	9.3172963	20.1489603	Fixed point on 350M constraint	614	615	1
616	9.3009894	20.1526591	Fixed point on 350M constraint	615	616	1
617	9.2846707	20.1563108	Fixed point on 350M constraint	616	617	1
618	9.2683445	20.1599152	Fixed point on 350M constraint	617	618	1
619	9.2520063	20.1634748	Fixed point on 350M constraint	618	619	1
620	9.2356585	20.1669850	Fixed point on 350M constraint	619	620	1

621	9.2193010	20.1704480	Fixed point on 350M constraint	620	621	1
622	9.2029337	20.1738661	Fixed point on 350M constraint	621	622	1
623	9.1865568	20.1772348	Fixed point on 350M constraint	622	623	1
624	9.1701702	20.1805563	Fixed point on 350M constraint	623	624	1
625	9.1537739	20.1838329	Fixed point on 350M constraint	624	625	1
626	9.1373702	20.1870601	Fixed point on 350M constraint	625	626	1
627	9.1209567	20.1902401	Fixed point on 350M constraint	626	627	1
628	9.1045335	20.1933730	Fixed point on 350M constraint	627	628	1
629	9.0881007	20.1964610	Fixed point on 350M constraint	628	629	1
630	9.0716604	20.1994995	Fixed point on 350M constraint	629	630	1
631	9.0552104	20.2024909	Fixed point on 350M constraint	630	631	1
632	9.0441890	20.2044672	Fixed point on 350M constraint	631	632	1
633	9.0380966	20.2055519	Fixed point on 350M constraint	632	633	1
634	9.0216317	20.2084490	Fixed point on 350M constraint	633	634	1
635	9.0051570	20.2112989	Fixed point on 350M constraint	634	635	1
636	8.9886749	20.2141016	Fixed point on 350M constraint	635	636	1
637	8.9721854	20.2168550	Fixed point on 350M constraint	636	637	1
638	8.9556883	20.2195634	Fixed point on 350M constraint	637	638	1
639	8.9391816	20.2222224	Fixed point on 350M constraint	638	639	1
640	8.9226697	20.2248342	Fixed point on 350M constraint	639	640	1
641	8.9061481	20.2274012	Fixed point on 350M constraint	640	641	1
642	8.8896213	20.2299187	Fixed point on 350M constraint	641	642	1
643	8.8652249	20.2335838	Fixed point on 350M constraint	642	643	1
644	8.8486917	20.2360542	Fixed point on 350M constraint	643	644	1
645	8.8321511	20.2384774	Fixed point on 350M constraint	644	645	1
646	8.8156030	20.2408535	Fixed point on 350M constraint	645	646	1
647	8.7990475	20.2431823	Fixed point on 350M constraint	646	647	1
648	8.7824867	20.2454641	Fixed point on 350M constraint	647	648	1
649	8.7659185	20.2476964	Fixed point on 350M constraint	648	649	1
650	8.7493451	20.2498815	Fixed point on 350M constraint	649	650	1
651	8.7395835	20.2511526	Fixed point on 350M constraint	650	651	1
652	8.7230021	20.2532929	Fixed point on 350M constraint	651	652	1
653	8.7064156	20.2553837	Fixed point on 350M constraint	652	653	1
654	8.6898239	20.2574251	Fixed point on 350M constraint	653	654	1
655	8.6732269	20.2594216	Fixed point on 350M constraint	654	655	1
656	8.6566225	20.2613687	Fixed point on 350M constraint	655	656	1
657	8.6400151	20.2632709	Fixed point on 350M constraint	656	657	1
658	8.6234003	20.2651237	Fixed point on 350M constraint	657	658	1
659	8.6067803	20.2669293	Fixed point on 350M constraint	658	659	1
660	8.5901572	20.2686855	Fixed point on 350M constraint	659	660	1
661	8.5735268	20.2703968	Fixed point on 350M constraint	660	661	1
662	8.5568934	20.2720587	Fixed point on 350M constraint	661	662	1
663	8.5402547	20.2736734	Fixed point on 350M constraint	662	663	1
664	8.5236109	20.2752410	Fixed point on 350M constraint	663	664	1
665	8.5069641	20.2767591	Fixed point on 350M constraint	664	665	1
666	8.4903120	20.2782301	Fixed point on 350M constraint	665	666	1
667	8.4736548	20.2796562	Fixed point on 350M constraint	666	667	1
668	8.4569946	20.2810306	Fixed point on 350M constraint	667	668	1
669	8.4403315	20.2823601	Fixed point on 350M constraint	668	669	1
670	8.4236654	20.2836425	Fixed point on 350M constraint	669	670	1
671	8.4069940	20.2848754	Fixed point on 350M constraint	670	671	1
672	8.3913351	20.2859893	Fixed point on 350M constraint	671	672	1
673	8.3805264	20.2867529	Fixed point on 350M constraint	672	673	1
674	8.3638487	20.2878915	Fixed point on 350M constraint	673	674	1
675	8.3471659	20.2889807	Fixed point on 350M constraint	674	675	1
676	8.3304823	20.2900250	Fixed point on 350M constraint	675	676	1
677	8.3137957	20.2910199	Fixed point on 350M constraint	676	677	1
678	8.2971062	20.2919676	Fixed point on 350M constraint	677	678	1
679	8.2804138	20.2928659	Fixed point on 350M constraint	678	679	1
680	8.2637184	20.2937193	Fixed point on 350M constraint	679	680	1
681	8.2470222	20.2945233	Fixed point on 350M constraint	680	681	1
682	8.2303232	20.2952801	Fixed point on 350M constraint	681	682	1
683	8.2136211	20.2959876	Fixed point on 350M constraint	682	683	1
684	8.1969162	20.2966501	Fixed point on 350M constraint	683	684	1
685	8.1802127	20.2972632	Fixed point on 350M constraint	684	685	1
686	8.1635041	20.2978291	Fixed point on 350M constraint	685	686	1
687	8.1467970	20.2983456	Fixed point on 350M constraint	686	687	1
688	8.1300869	20.2988173	Fixed point on 350M constraint	687	688	1
689	8.1133739	20.2992395	Fixed point on 350M constraint	688	689	1
690	8.0966625	20.2996145	Fixed point on 350M constraint	689	690	1

691	8.0799481	20.2999424	Fixed point on 350M constraint	690	691	1
692	8.0632352	20.3002209	Fixed point on 350M constraint	691	692	1
693	8.0465194	20.3004522	Fixed point on 350M constraint	692	693	1
694	8.0298051	20.3006363	Fixed point on 350M constraint	693	694	1
695	8.0130879	20.3007733	Fixed point on 350M constraint	694	695	1
696	7.9963723	20.3008632	Fixed point on 350M constraint	695	696	1
697	7.9796559	20.3009036	Fixed point on 350M constraint	696	697	1
698	7.9629389	20.3008969	Fixed point on 350M constraint	697	698	1
699	7.9462211	20.3008430	Fixed point on 350M constraint	698	699	1
700	7.9295050	20.3007419	Fixed point on 350M constraint	699	700	1
701	7.9127903	20.3005914	Fixed point on 350M constraint	700	701	1
702	7.8960728	20.3003938	Fixed point on 350M constraint	701	702	1
703	7.8793590	20.3001490	Fixed point on 350M constraint	702	703	1
704	7.8626446	20.2998571	Fixed point on 350M constraint	703	704	1
705	7.8459317	20.2995179	Fixed point on 350M constraint	704	705	1
706	7.8292181	20.2991294	Fixed point on 350M constraint	705	706	1
707	7.8125083	20.2986937	Fixed point on 350M constraint	706	707	1
708	7.7957979	20.2982109	Fixed point on 350M constraint	707	708	1
709	7.7790890	20.2976809	Fixed point on 350M constraint	708	709	1
710	7.7623817	20.2971037	Fixed point on 350M constraint	709	710	1
711	7.7456781	20.2964771	Fixed point on 350M constraint	710	711	1
712	7.7289740	20.2958056	Fixed point on 350M constraint	711	712	1
713	7.7122713	20.2950848	Fixed point on 350M constraint	712	713	1
714	7.6955725	20.2943167	Fixed point on 350M constraint	713	714	1
715	7.6788753	20.2935015	Fixed point on 350M constraint	714	715	1
716	7.6621819	20.2926368	Fixed point on 350M constraint	715	716	1
717	7.6454901	20.2917273	Fixed point on 350M constraint	716	717	1
718	7.6287998	20.2907683	Fixed point on 350M constraint	717	718	1
719	7.6121134	20.2897622	Fixed point on 350M constraint	718	719	1
720	7.5954285	20.2887112	Fixed point on 350M constraint	719	720	1
721	7.5787475	20.2876108	Fixed point on 350M constraint	720	721	1
722	7.5620703	20.2864609	Fixed point on 350M constraint	721	722	1
723	7.5453947	20.2852662	Fixed point on 350M constraint	722	723	1
724	7.5287252	20.2840242	Fixed point on 350M constraint	723	724	1
725	7.5120572	20.2827329	Fixed point on 350M constraint	724	725	1
726	7.4953931	20.2813967	Fixed point on 350M constraint	725	726	1
727	7.4787328	20.2800110	Fixed point on 350M constraint	726	727	1
728	7.4620786	20.2785805	Fixed point on 350M constraint	727	728	1
729	7.4454260	20.2771005	Fixed point on 350M constraint	728	729	1
730	7.4287795	20.2755733	Fixed point on 350M constraint	729	730	1
731	7.4121346	20.2739990	Fixed point on 350M constraint	730	731	1
732	7.3954980	20.2723776	Fixed point on 350M constraint	731	732	1
733	7.3788631	20.2707090	Fixed point on 350M constraint	732	733	1
734	7.3622342	20.2689932	Fixed point on 350M constraint	733	734	1
735	7.3456092	20.2672302	Fixed point on 350M constraint	734	735	1
736	7.3289902	20.2654201	Fixed point on 350M constraint	735	736	1
737	7.3123774	20.2635629	Fixed point on 350M constraint	736	737	1
738	7.2957684	20.2616584	Fixed point on 350M constraint	737	738	1
739	7.2791633	20.2597068	Fixed point on 350M constraint	738	739	1
740	7.2625666	20.2577081	Fixed point on 350M constraint	739	740	1
741	7.2459759	20.2556622	Fixed point on 350M constraint	740	741	1
742	7.2293891	20.2535691	Fixed point on 350M constraint	741	742	1
743	7.2128084	20.2514311	Fixed point on 350M constraint	742	743	1
744	7.1962339	20.2492437	Fixed point on 350M constraint	743	744	1
745	7.1796677	20.2470092	Fixed point on 350M constraint	744	745	1
746	7.1631053	20.2447274	Fixed point on 350M constraint	745	746	1
747	7.1465514	20.2424008	Fixed point on 350M constraint	746	747	1
748	7.1300035	20.2400248	Fixed point on 350M constraint	747	748	1
749	7.1134618	20.2376038	Fixed point on 350M constraint	748	749	1
750	7.0969262	20.2351357	Fixed point on 350M constraint	749	750	1
751	7.0803990	20.2326204	Fixed point on 350M constraint	750	751	1
752	7.0638779	20.2300580	Fixed point on 350M constraint	751	752	1
753	7.0473652	20.2274483	Fixed point on 350M constraint	752	753	1
754	7.0308608	20.2247938	Fixed point on 350M constraint	753	754	1
755	7.0143626	20.2220899	Fixed point on 350M constraint	754	755	1
756	6.9978728	20.2193411	Fixed point on 350M constraint	755	756	1
757	6.9813891	20.2165450	Fixed point on 350M constraint	756	757	1
758	6.9649161	20.2137019	Fixed point on 350M constraint	757	758	1
759	6.9484492	20.2108138	Fixed point on 350M constraint	758	759	1
760	6.9319907	20.2078763	Fixed point on 350M constraint	759	760	1

761	6.9155428	20.2048939	Fixed point on 350M constraint	760	761	1
762	6.8991011	20.2018643	Fixed point on 350M constraint	761	762	1
763	6.8826678	20.1987898	Fixed point on 350M constraint	762	763	1
764	6.8662451	20.1956682	Fixed point on 350M constraint	763	764	1
765	6.8498286	20.1924994	Fixed point on 350M constraint	764	765	1
766	6.8334250	20.1892834	Fixed point on 350M constraint	765	766	1
767	6.8170275	20.1860225	Fixed point on 350M constraint	766	767	1
768	6.8006407	20.1827145	Fixed point on 350M constraint	767	768	1
769	6.7842623	20.1793593	Fixed point on 350M constraint	768	769	1
770	6.7678946	20.1759592	Fixed point on 350M constraint	769	770	1
771	6.7515353	20.1725119	Fixed point on 350M constraint	770	771	1
772	6.7351867	20.1690197	Fixed point on 350M constraint	771	772	1
773	6.7188464	20.1654803	Fixed point on 350M constraint	772	773	1
774	6.7025191	20.1618938	Fixed point on 350M constraint	773	774	1
775	6.6862003	20.1582623	Fixed point on 350M constraint	774	775	1
776	6.6698921	20.1545837	Fixed point on 350M constraint	775	776	1
777	6.6535945	20.1508602	Fixed point on 350M constraint	776	777	1
778	6.6373077	20.1470896	Fixed point on 350M constraint	777	778	1
779	6.6210315	20.1432740	Fixed point on 350M constraint	778	779	1
780	6.6047661	20.1394112	Fixed point on 350M constraint	779	780	1
781	6.5885113	20.1355035	Fixed point on 350M constraint	780	781	1
782	6.5722672	20.1315487	Fixed point on 350M constraint	781	782	1
783	6.5560360	20.1275489	Fixed point on 350M constraint	782	783	1
784	6.5398155	20.1235043	Fixed point on 350M constraint	783	784	1
785	6.5236058	20.1194125	Fixed point on 350M constraint	784	785	1
786	6.5074090	20.1152757	Fixed point on 350M constraint	785	786	1
787	6.4912228	20.1110918	Fixed point on 350M constraint	786	787	1
788	6.4750474	20.1068630	Fixed point on 350M constraint	787	788	1
789	6.4588872	20.1025893	Fixed point on 350M constraint	788	789	1
790	6.4427377	20.0982684	Fixed point on 350M constraint	789	790	1
791	6.4265989	20.0939026	Fixed point on 350M constraint	790	791	1
792	6.4104753	20.0894918	Fixed point on 350M constraint	791	792	1
793	6.3943624	20.0850339	Fixed point on 350M constraint	792	793	1
794	6.3782625	20.0805311	Fixed point on 350M constraint	793	794	1
795	6.3621756	20.0759834	Fixed point on 350M constraint	794	795	1
796	6.3461016	20.0713908	Fixed point on 350M constraint	795	796	1
797	6.3300406	20.0667532	Fixed point on 350M constraint	796	797	1
798	6.3139926	20.0620685	Fixed point on 350M constraint	797	798	1
799	6.2979598	20.0573389	Fixed point on 350M constraint	798	799	1
800	6.2819378	20.0525643	Fixed point on 350M constraint	799	800	1
801	6.2659309	20.0477449	Fixed point on 350M constraint	800	801	1
802	6.2499371	20.0428805	Fixed point on 350M constraint	801	802	1
803	6.2339585	20.0379712	Fixed point on 350M constraint	802	803	1
804	6.2179929	20.0330170	Fixed point on 350M constraint	803	804	1
805	6.2020403	20.0280156	Fixed point on 350M constraint	804	805	1
806	6.1861029	20.0229716	Fixed point on 350M constraint	805	806	1
807	6.1701808	20.0178826	Fixed point on 350M constraint	806	807	1
808	6.1542716	20.0127465	Fixed point on 350M constraint	807	808	1
809	6.1383778	20.0075677	Fixed point on 350M constraint	808	809	1
810	6.1224992	20.0023440	Fixed point on 350M constraint	809	810	1
811	6.1066335	19.9970731	Fixed point on 350M constraint	810	811	1
812	6.0907854	19.9917596	Fixed point on 350M constraint	811	812	1
813	6.0749504	19.9864012	Fixed point on 350M constraint	812	813	1
814	6.0591328	19.9809978	Fixed point on 350M constraint	813	814	1
815	6.0433282	19.9755518	Fixed point on 350M constraint	814	815	1
816	6.0275412	19.9700586	Fixed point on 350M constraint	815	816	1
817	6.0117672	19.9645227	Fixed point on 350M constraint	816	817	1
818	5.9960107	19.9589397	Fixed point on 350M constraint	817	818	1
819	5.9802695	19.9533162	Fixed point on 350M constraint	818	819	1
820	5.9645458	19.9476456	Fixed point on 350M constraint	819	820	1
821	5.9488374	19.9419301	Fixed point on 350M constraint	820	821	1
822	5.9331443	19.9361719	Fixed point on 350M constraint	821	822	1
823	5.9174687	19.9303710	Fixed point on 350M constraint	822	823	1
824	5.9018084	19.9245230	Fixed point on 350M constraint	823	824	1
825	5.8861657	19.9186323	Fixed point on 350M constraint	824	825	1
826	5.8705405	19.9126966	Fixed point on 350M constraint	825	826	1
827	5.8549306	19.9067183	Fixed point on 350M constraint	826	827	1
828	5.8393382	19.9006951	Fixed point on 350M constraint	827	828	1
829	5.8237634	19.8946293	Fixed point on 350M constraint	828	829	1
830	5.8082062	19.8885185	Fixed point on 350M constraint	829	830	1

831	5.7926643	19.8823628	Fixed point on 350M constraint	830	831	1
832	5.7771422	19.8761666	Fixed point on 350M constraint	831	832	1
833	5.7616376	19.8699234	Fixed point on 350M constraint	832	833	1
834	5.7461484	19.8636374	Fixed point on 350M constraint	833	834	1
835	5.7306789	19.8573088	Fixed point on 350M constraint	834	835	1
836	5.7152271	19.8509375	Fixed point on 350M constraint	835	836	1
837	5.6997951	19.8445212	Fixed point on 350M constraint	836	837	1
838	5.6843784	19.8380624	Fixed point on 350M constraint	837	838	1
839	5.6689815	19.8315586	Fixed point on 350M constraint	838	839	1
840	5.6536022	19.8250121	Fixed point on 350M constraint	839	840	1
841	5.6382428	19.8184229	Fixed point on 350M constraint	840	841	1
842	5.6229032	19.8117911	Fixed point on 350M constraint	841	842	1
843	5.6075811	19.8051144	Fixed point on 350M constraint	842	843	1
844	5.5922767	19.7983950	Fixed point on 350M constraint	843	844	1
845	5.5769921	19.7916329	Fixed point on 350M constraint	844	845	1
846	5.5617274	19.7848282	Fixed point on 350M constraint	845	846	1
847	5.5464825	19.7779808	Fixed point on 350M constraint	846	847	1
848	5.5312552	19.7710907	Fixed point on 350M constraint	847	848	1
849	5.5160500	19.7641557	Fixed point on 350M constraint	848	849	1
850	5.5008624	19.7571803	Fixed point on 350M constraint	849	850	1
851	5.4856970	19.7501622	Fixed point on 350M constraint	850	851	1
852	5.4705491	19.7430992	Fixed point on 350M constraint	851	852	1
853	5.4554212	19.7359958	Fixed point on 350M constraint	852	853	1
854	5.4403153	19.7288497	Fixed point on 350M constraint	853	854	1
855	5.4252293	19.7216609	Fixed point on 350M constraint	854	855	1
856	5.4101632	19.7144295	Fixed point on 350M constraint	855	856	1
857	5.3951170	19.7071554	Fixed point on 350M constraint	856	857	1
858	5.3800928	19.6998386	Fixed point on 350M constraint	857	858	1
859	5.3650886	19.6924791	Fixed point on 350M constraint	858	859	1
860	5.3501065	19.6850793	Fixed point on 350M constraint	859	860	1
861	5.3351443	19.6776367	Fixed point on 350M constraint	860	861	1
862	5.3202043	19.6701515	Fixed point on 350M constraint	861	862	1
863	5.3052841	19.6626259	Fixed point on 350M constraint	862	863	1
864	5.2903861	19.6550576	Fixed point on 350M constraint	863	864	1
865	5.2755102	19.6474466	Fixed point on 350M constraint	864	865	1
866	5.2606542	19.6397952	Fixed point on 350M constraint	865	866	1
867	5.2458226	19.6321011	Fixed point on 350M constraint	866	867	1
868	5.2310110	19.6243644	Fixed point on 350M constraint	867	868	1
869	5.2162215	19.6165872	Fixed point on 350M constraint	868	869	1
870	5.2014541	19.6087696	Fixed point on 350M constraint	869	870	1
871	5.1867089	19.6009094	Fixed point on 350M constraint	870	871	1
872	5.1719859	19.5930064	Fixed point on 350M constraint	871	872	1
873	5.1572873	19.5850653	Fixed point on 350M constraint	872	873	1
874	5.1426087	19.5770793	Fixed point on 350M constraint	873	874	1
875	5.1279544	19.5690551	Fixed point on 350M constraint	874	875	1
876	5.1133224	19.5609882	Fixed point on 350M constraint	875	876	1
877	5.0987125	19.5528809	Fixed point on 350M constraint	876	877	1
878	5.0841270	19.5447310	Fixed point on 350M constraint	877	878	1
879	5.0695637	19.5365428	Fixed point on 350M constraint	878	879	1
880	5.0550249	19.5283120	Fixed point on 350M constraint	879	880	1
881	5.0405083	19.5200408	Fixed point on 350M constraint	880	881	1
882	5.0260161	19.5117291	Fixed point on 350M constraint	881	882	1
883	5.0115483	19.5033770	Fixed point on 350M constraint	882	883	1
884	4.9971028	19.4949823	Fixed point on 350M constraint	883	884	1
885	4.9826817	19.4865493	Fixed point on 350M constraint	884	885	1
886	4.9682850	19.4780737	Fixed point on 350M constraint	885	886	1
887	4.9539106	19.4695600	Fixed point on 350M constraint	886	887	1
888	4.9395606	19.4610057	Fixed point on 350M constraint	887	888	1
889	4.9252374	19.4524089	Fixed point on 350M constraint	888	889	1
890	4.9109363	19.4437738	Fixed point on 350M constraint	889	890	1
891	4.8966620	19.4350983	Fixed point on 350M constraint	890	891	1
892	4.8824099	19.4263824	Fixed point on 350M constraint	891	892	1
893	4.8681845	19.4176261	Fixed point on 350M constraint	892	893	1
894	4.8539836	19.4088316	Fixed point on 350M constraint	893	894	1
895	4.8398071	19.3999967	Fixed point on 350M constraint	894	895	1
896	4.8256552	19.3911213	Fixed point on 350M constraint	895	896	1
897	4.8115299	19.3822055	Fixed point on 350M constraint	896	897	1
898	4.7974292	19.3732516	Fixed point on 350M constraint	897	898	1
899	4.7833530	19.3642572	Fixed point on 350M constraint	898	899	1
900	4.7693035	19.3552246	Fixed point on 350M constraint	899	900	1

901	4.7552807	19.3461516	Fixed point on 350M constraint	900	901	1
902	4.7412824	19.3370382	Fixed point on 350M constraint	901	902	1
903	4.7138303	19.3190742	Fixed point on 350M constraint	902	903	1
904	4.6998582	19.3099226	Fixed point on 350M constraint	903	904	1
905	4.6859129	19.3007328	Fixed point on 350M constraint	904	905	1
906	4.6719921	19.2915049	Fixed point on 350M constraint	905	906	1
907	4.6580980	19.2822365	Fixed point on 350M constraint	906	907	1
908	4.6442285	19.2729300	Fixed point on 350M constraint	907	908	1
909	4.6182846	19.2553657	Fixed point on 350M constraint	908	909	1
910	4.6164998	19.2541507	Fixed point on 350M constraint	909	910	1
911	4.6027128	19.2447274	Fixed point on 350M constraint	910	911	1
912	4.5967635	19.2406445	Fixed point on 350M constraint	911	912	1
913	4.5861424	19.2333367	Fixed point on 350M constraint	912	913	1
914	4.5724089	19.2238370	Fixed point on 350M constraint	913	914	1
915	4.5587022	19.2142992	Fixed point on 350M constraint	914	915	1
916	4.5450222	19.2047209	Fixed point on 350M constraint	915	916	1
917	4.5313691	19.1951044	Fixed point on 350M constraint	916	917	1
918	4.5177427	19.1854520	Fixed point on 350M constraint	917	918	1
919	4.5041453	19.1757592	Fixed point on 350M constraint	918	919	1
920	4.4905748	19.1660282	Fixed point on 350M constraint	919	920	1
921	4.4770310	19.1562613	Fixed point on 350M constraint	920	921	1
922	4.4635163	19.1464539	Fixed point on 350M constraint	921	922	1
923	4.4500284	19.1366106	Fixed point on 350M constraint	922	923	1
924	4.4365696	19.1267292	Fixed point on 350M constraint	923	924	1
925	4.4231375	19.1168095	Fixed point on 350M constraint	924	925	1
926	4.4097345	19.1068517	Fixed point on 350M constraint	925	926	1
927	4.3963606	19.0968579	Fixed point on 350M constraint	926	927	1
928	4.3830157	19.0868237	Fixed point on 350M constraint	927	928	1
929	4.3696976	19.0767559	Fixed point on 350M constraint	928	929	1
930	4.3564086	19.0666476	Fixed point on 350M constraint	929	930	1
931	4.3431487	19.0565034	Fixed point on 350M constraint	930	931	1
932	4.3299155	19.0463232	Fixed point on 350M constraint	931	932	1
933	4.3167137	19.0361049	Fixed point on 350M constraint	932	933	1
934	4.3035410	19.0258483	Fixed point on 350M constraint	933	934	1
935	4.2903974	19.0155559	Fixed point on 350M constraint	934	935	1
936	4.2772806	19.0052275	Fixed point on 350M constraint	935	936	1
937	4.2641951	18.9948610	Fixed point on 350M constraint	936	937	1
938	4.2511387	18.9844585	Fixed point on 350M constraint	937	938	1
939	4.2381137	18.9740200	Fixed point on 350M constraint	938	939	1
940	4.2251154	18.9635434	Fixed point on 350M constraint	939	940	1
941	4.2121486	18.9530332	Fixed point on 350M constraint	940	941	1
942	4.1992130	18.9424847	Fixed point on 350M constraint	941	942	1
943	4.1863043	18.9319003	Fixed point on 350M constraint	942	943	1
944	4.1734293	18.9212777	Fixed point on 350M constraint	943	944	1
945	4.1605810	18.9106214	Fixed point on 350M constraint	944	945	1
946	4.1477642	18.8999292	Fixed point on 350M constraint	945	946	1
947	4.1349786	18.8892011	Fixed point on 350M constraint	946	947	1
948	4.1222245	18.8784371	Fixed point on 350M constraint	947	948	1
949	4.1094994	18.8676348	Fixed point on 350M constraint	948	949	1
950	4.0968058	18.8567989	Fixed point on 350M constraint	949	950	1
951	4.0841412	18.8459293	Fixed point on 350M constraint	950	951	1
952	4.0715080	18.8350215	Fixed point on 350M constraint	951	952	1
953	4.0589084	18.8240800	Fixed point on 350M constraint	952	953	1
954	4.0463379	18.8131026	Fixed point on 350M constraint	953	954	1
955	4.0337989	18.8020892	Fixed point on 350M constraint	954	955	1
956	4.0212912	18.7910422	Fixed point on 350M constraint	955	956	1
957	4.0088148	18.7799592	Fixed point on 350M constraint	956	957	1
958	4.0040719	18.7757327	Fixed point on 350M constraint	957	958	1
959	3.9916269	18.7646138	Fixed point on 350M constraint	958	959	1
960	3.9792132	18.7534612	Fixed point on 350M constraint	959	960	1
961	3.9668333	18.7422749	Fixed point on 350M constraint	960	961	1
962	3.9544824	18.7310527	Fixed point on 350M constraint	961	962	1
963	3.9421652	18.7197968	Fixed point on 350M constraint	962	963	1
964	3.9298794	18.7085050	Fixed point on 350M constraint	963	964	1
965	3.9176250	18.6971795	Fixed point on 350M constraint	964	965	1
966	3.9054042	18.6858203	Fixed point on 350M constraint	965	966	1
967	3.8932148	18.6744274	Fixed point on 350M constraint	966	967	1
968	3.8810591	18.6629986	Fixed point on 350M constraint	967	968	1
969	3.8689348	18.6515361	Fixed point on 350M constraint	968	969	1
970	3.8568441	18.6400421	Fixed point on 350M constraint	969	970	1

971	3.8447849	18.6285123	Fixed point on 350M constraint	970	971	1
972	3.8327593	18.6169487	Fixed point on 350M constraint	971	972	1
973	3.8207651	18.6053515	Fixed point on 350M constraint	972	973	1
974	3.8088046	18.5937205	Fixed point on 350M constraint	973	974	1
975	3.7968778	18.5820559	Fixed point on 350M constraint	974	975	1
976	3.7849846	18.5703576	Fixed point on 350M constraint	975	976	1
977	3.7731252	18.5586278	Fixed point on 350M constraint	976	977	1
978	3.7612971	18.5468644	Fixed point on 350M constraint	977	978	1
979	3.7495027	18.5350673	Fixed point on 350M constraint	978	979	1
980	3.7377442	18.5232365	Fixed point on 350M constraint	979	980	1
981	3.7260172	18.5113742	Fixed point on 350M constraint	980	981	1
982	3.7143239	18.4994783	Fixed point on 350M constraint	981	982	1
983	3.7026665	18.4875486	Fixed point on 350M constraint	982	983	1
984	3.6910405	18.4755876	Fixed point on 350M constraint	983	984	1
985	3.6794505	18.4635928	Fixed point on 350M constraint	984	985	1
986	3.6678941	18.4515666	Fixed point on 350M constraint	985	986	1
987	3.6563715	18.4395090	Fixed point on 350M constraint	986	987	1
988	3.6448825	18.4274177	Fixed point on 350M constraint	987	988	1
989	3.6334295	18.4152949	Fixed point on 350M constraint	988	989	1
990	3.6220102	18.4031407	Fixed point on 350M constraint	989	990	1
991	3.6106246	18.3909528	Fixed point on 350M constraint	990	991	1
992	3.5992750	18.3787357	Fixed point on 350M constraint	991	992	1
993	3.5879591	18.3664849	Fixed point on 350M constraint	992	993	1
994	3.5766791	18.3542027	Fixed point on 350M constraint	993	994	1
995	3.5654351	18.3418891	Fixed point on 350M constraint	994	995	1
996	3.5542225	18.3295440	Fixed point on 350M constraint	995	996	1
997	3.5430482	18.3171674	Fixed point on 350M constraint	996	997	1
998	3.5319075	18.3047594	Fixed point on 350M constraint	997	998	1
999	3.5208029	18.2923200	Fixed point on 350M constraint	998	999	1
1000	3.5097342	18.2798492	Fixed point on 350M constraint	999	1000	1
1001	3.4987015	18.2673491	Fixed point on 350M constraint	1000	1001	1
1002	3.4877025	18.2548176	Fixed point on 350M constraint	1001	1002	1
1003	3.4767395	18.2422547	Fixed point on 350M constraint	1002	1003	1
1004	3.4658124	18.2296603	Fixed point on 350M constraint	1003	1004	1
1005	3.4549214	18.2170367	Fixed point on 350M constraint	1004	1005	1
1006	3.4440663	18.2043817	Fixed point on 350M constraint	1005	1006	1
1007	3.4332472	18.1916975	Fixed point on 350M constraint	1006	1007	1
1008	3.4224641	18.1789818	Fixed point on 350M constraint	1007	1008	1
1009	3.4117192	18.1662370	Fixed point on 350M constraint	1008	1009	1
1010	3.4010081	18.1534629	Fixed point on 350M constraint	1009	1010	1
1011	3.3903329	18.1406575	Fixed point on 350M constraint	1010	1011	1
1012	3.3796960	18.1278228	Fixed point on 350M constraint	1011	1012	1
1013	3.3690951	18.1149566	Fixed point on 350M constraint	1012	1013	1
1014	3.3585302	18.1020636	Fixed point on 350M constraint	1013	1014	1
1015	3.3480036	18.0891391	Fixed point on 350M constraint	1014	1015	1
1016	3.3375107	18.0761854	Fixed point on 350M constraint	1015	1016	1
1017	3.3270583	18.0632025	Fixed point on 350M constraint	1016	1017	1
1018	3.3166396	18.0501904	Fixed point on 350M constraint	1017	1018	1
1019	3.3062592	18.0371491	Fixed point on 350M constraint	1018	1019	1
1020	3.2959171	18.0240786	Fixed point on 350M constraint	1019	1020	1
1021	3.2856110	18.0109811	Fixed point on 350M constraint	1020	1021	1
1022	3.2753431	17.9978523	Fixed point on 350M constraint	1021	1022	1
1023	3.2651112	17.9846964	Fixed point on 350M constraint	1022	1023	1
1024	3.2549177	17.9715092	Fixed point on 350M constraint	1023	1024	1
1025	3.2447623	17.9582972	Fixed point on 350M constraint	1024	1025	1
1026	3.2346430	17.9450538	Fixed point on 350M constraint	1025	1026	1
1027	3.2245620	17.9317834	Fixed point on 350M constraint	1026	1027	1
1028	3.2145192	17.9184861	Fixed point on 350M constraint	1027	1028	1
1029	3.2045148	17.9051574	Fixed point on 350M constraint	1028	1029	1
1030	3.1945463	17.8918039	Fixed point on 350M constraint	1029	1030	1
1031	3.1846184	17.8784213	Fixed point on 350M constraint	1030	1031	1
1032	3.1747264	17.8650117	Fixed point on 350M constraint	1031	1032	1
1033	3.1648728	17.8515729	Fixed point on 350M constraint	1032	1033	1
1034	3.1550575	17.8381071	Fixed point on 350M constraint	1033	1034	1
1035	3.1452827	17.8246144	Fixed point on 350M constraint	1034	1035	1
1036	3.1355439	17.8110925	Fixed point on 350M constraint	1035	1036	1
1037	3.1258456	17.7975459	Fixed point on 350M constraint	1036	1037	1
1038	3.1161834	17.7839701	Fixed point on 350M constraint	1037	1038	1
1039	3.1065618	17.7703696	Fixed point on 350M constraint	1038	1039	1
1040	3.1037624	17.7664036	Fixed point on 350M constraint	1039	1040	1

1041	3.0941790	17.7527739	Fixed point on 350M constraint	1040	1041	1
1042	3.0846339	17.7391195	Fixed point on 350M constraint	1041	1042	1
1043	3.0751271	17.7254382	Fixed point on 350M constraint	1042	1043	1
1044	3.0656608	17.7117276	Fixed point on 350M constraint	1043	1044	1
1045	3.0562328	17.6979946	Fixed point on 350M constraint	1044	1045	1
1046	3.0468432	17.6842324	Fixed point on 350M constraint	1045	1046	1
1047	3.0374941	17.6704433	Fixed point on 350M constraint	1046	1047	1
1048	3.0281832	17.6566295	Fixed point on 350M constraint	1047	1048	1
1049	3.0189130	17.6427909	Fixed point on 350M constraint	1048	1049	1
1050	3.0096810	17.6289254	Fixed point on 350M constraint	1049	1050	1
1051	3.0004896	17.6150330	Fixed point on 350M constraint	1050	1051	1
1052	2.9913365	17.6011158	Fixed point on 350M constraint	1051	1052	1
1053	2.9822240	17.5871717	Fixed point on 350M constraint	1052	1053	1
1054	2.9731498	17.5732052	Fixed point on 350M constraint	1053	1054	1
1055	2.9641161	17.5592094	Fixed point on 350M constraint	1054	1055	1
1056	2.9551231	17.5451912	Fixed point on 350M constraint	1055	1056	1
1057	2.9461683	17.5311483	Fixed point on 350M constraint	1056	1057	1
1058	2.9372541	17.5170784	Fixed point on 350M constraint	1057	1058	1
1059	2.9283804	17.5029839	Fixed point on 350M constraint	1058	1059	1
1060	2.9195474	17.4888646	Fixed point on 350M constraint	1059	1060	1
1061	2.9107549	17.4747206	Fixed point on 350M constraint	1060	1061	1
1062	2.9020007	17.4605542	Fixed point on 350M constraint	1061	1062	1
1063	2.8932894	17.4463608	Fixed point on 350M constraint	1062	1063	1
1064	2.8846163	17.4321427	Fixed point on 350M constraint	1063	1064	1
1065	2.8759839	17.4179022	Fixed point on 350M constraint	1064	1065	1
1066	2.8673920	17.4036369	Fixed point on 350M constraint	1065	1066	1
1067	2.8588430	17.3893470	Fixed point on 350M constraint	1066	1067	1
1068	2.8503323	17.3750346	Fixed point on 350M constraint	1067	1068	1
1069	2.8418622	17.3606975	Fixed point on 350M constraint	1068	1069	1
1070	2.8334349	17.3463356	Fixed point on 350M constraint	1069	1070	1
1071	2.8250459	17.3319514	Fixed point on 350M constraint	1070	1071	1
1072	2.8166998	17.3175446	Fixed point on 350M constraint	1071	1072	1
1073	2.8083943	17.3031132	Fixed point on 350M constraint	1072	1073	1
1074	2.8001293	17.2886571	Fixed point on 350M constraint	1073	1074	1
1075	2.7919073	17.2741807	Fixed point on 350M constraint	1074	1075	1
1076	2.7837257	17.2596797	Fixed point on 350M constraint	1075	1076	1
1077	2.7755848	17.2451561	Fixed point on 350M constraint	1076	1077	1
1078	2.7674845	17.2306102	Fixed point on 350M constraint	1077	1078	1
1079	2.7594270	17.2160417	Fixed point on 350M constraint	1078	1079	1
1080	2.7514102	17.2014509	Fixed point on 350M constraint	1079	1080	1
1081	2.7434361	17.1868375	Fixed point on 350M constraint	1080	1081	1
1082	2.7355027	17.1722017	Fixed point on 350M constraint	1081	1082	1
1083	2.7276099	17.1575434	Fixed point on 350M constraint	1082	1083	1
1084	2.7197599	17.1428627	Fixed point on 350M constraint	1083	1084	1
1085	2.7119528	17.1281618	Fixed point on 350M constraint	1084	1085	1
1086	2.7012256	17.1077992	Fixed point on 350M constraint	1085	1086	1
1087	2.6964423	17.0986521	Fixed point on 350M constraint	1086	1087	1
1088	2.6887592	17.0838861	Fixed point on 350M constraint	1087	1088	1
1089	2.6811190	17.0690976	Fixed point on 350M constraint	1088	1089	1
1090	2.6735217	17.0542866	Fixed point on 350M constraint	1089	1090	1
1091	2.6659650	17.0394554	Fixed point on 350M constraint	1090	1091	1
1092	2.6584511	17.0246040	Fixed point on 350M constraint	1091	1092	1
1093	2.6509801	17.0097302	Fixed point on 350M constraint	1092	1093	1
1094	2.6435520	16.9948361	Fixed point on 350M constraint	1093	1094	1
1095	2.6361645	16.9799218	Fixed point on 350M constraint	1094	1095	1
1096	2.6288198	16.9649851	Fixed point on 350M constraint	1095	1096	1
1097	2.6215180	16.9500281	Fixed point on 350M constraint	1096	1097	1
1098	2.6142591	16.9350532	Fixed point on 350M constraint	1097	1098	1
1099	2.6070430	16.9200558	Fixed point on 350M constraint	1098	1099	1
1100	2.5998698	16.9050383	Fixed point on 350M constraint	1099	1100	1
1101	2.5927395	16.8900005	Fixed point on 350M constraint	1100	1101	1
1102	2.5856521	16.8749447	Fixed point on 350M constraint	1101	1102	1
1103	2.5786053	16.8598687	Fixed point on 350M constraint	1102	1103	1
1104	2.5716036	16.8447703	Fixed point on 350M constraint	1103	1104	1
1105	2.5646448	16.8296561	Fixed point on 350M constraint	1104	1105	1
1106	2.5577288	16.8145195	Fixed point on 350M constraint	1105	1106	1
1107	2.5508558	16.7993649	Fixed point on 350M constraint	1106	1107	1
1108	2.5440256	16.7841901	Fixed point on 350M constraint	1107	1108	1
1109	2.5372383	16.7689974	Fixed point on 350M constraint	1108	1109	1
1110	2.5304961	16.7537867	Fixed point on 350M constraint	1109	1110	1

1111	2.5237968	16.7385557	Fixed point on 350M constraint	1110	1111	1
1112	2.5171404	16.7233046	Fixed point on 350M constraint	1111	1112	1
1113	2.5105269	16.7080377	Fixed point on 350M constraint	1112	1113	1
1114	2.5094156	16.7054618	Fixed point on 350M constraint	1113	1114	1
1115	2.5029940	16.6905183	Fixed point on 350M constraint	1114	1115	1
1116	2.4964685	16.6752133	Fixed point on 350M constraint	1115	1116	1
1117	2.4899859	16.6598903	Fixed point on 350M constraint	1116	1117	1
1118	2.4835461	16.6445493	Fixed point on 350M constraint	1117	1118	1
1119	2.4771515	16.6291903	Fixed point on 350M constraint	1118	1119	1
1120	2.4707998	16.6138112	Fixed point on 350M constraint	1119	1120	1
1121	2.4644932	16.5984163	Fixed point on 350M constraint	1120	1121	1
1122	2.4582296	16.5830035	Fixed point on 350M constraint	1121	1122	1
1123	2.4520088	16.5675749	Fixed point on 350M constraint	1122	1123	1
1124	2.4458331	16.5521261	Fixed point on 350M constraint	1123	1124	1
1125	2.4397004	16.5366616	Fixed point on 350M constraint	1124	1125	1
1126	2.4336128	16.5211814	Fixed point on 350M constraint	1125	1126	1
1127	2.4239516	16.4963407	Fixed point on 350M constraint	1126	1127	1
1128	2.4214962	16.4899739	Fixed point on 350M constraint	1127	1128	1
1129	2.4155418	16.4744420	Fixed point on 350M constraint	1128	1129	1
1130	2.4096303	16.4588945	Fixed point on 350M constraint	1129	1130	1
1131	2.4037639	16.4433289	Fixed point on 350M constraint	1130	1131	1
1132	2.3979404	16.4277454	Fixed point on 350M constraint	1131	1132	1
1133	2.3921621	16.4121484	Fixed point on 350M constraint	1132	1133	1
1134	2.3864289	16.3965334	Fixed point on 350M constraint	1133	1134	1
1135	2.3807386	16.3809027	Fixed point on 350M constraint	1134	1135	1
1136	2.3750958	16.3652563	Fixed point on 350M constraint	1135	1136	1
1137	2.3694958	16.3495942	Fixed point on 350M constraint	1136	1137	1
1138	2.3639388	16.3339163	Fixed point on 350M constraint	1137	1138	1
1139	2.3584291	16.3182228	Fixed point on 350M constraint	1138	1139	1
1140	2.3529624	16.3025157	Fixed point on 350M constraint	1139	1140	1
1141	2.3475408	16.2867907	Fixed point on 350M constraint	1140	1141	1
1142	2.3421643	16.2710522	Fixed point on 350M constraint	1141	1142	1
1143	2.3368331	16.2552980	Fixed point on 350M constraint	1142	1143	1
1144	2.3315469	16.2395304	Fixed point on 350M constraint	1143	1144	1
1145	2.3282917	16.2297455	Fixed point on 350M constraint	1144	1145	1
1146	2.3262631	16.2236189	Fixed point on 350M constraint	1145	1146	1
1147	2.3210650	16.2078198	Fixed point on 350M constraint	1146	1147	1
1148	2.3159121	16.1920072	Fixed point on 350M constraint	1147	1148	1
1149	2.3108067	16.1761789	Fixed point on 350M constraint	1148	1149	1
1150	2.3057441	16.1603394	Fixed point on 350M constraint	1149	1150	1
1151	2.3007290	16.1444819	Fixed point on 350M constraint	1150	1151	1
1152	2.2957567	16.1286131	Fixed point on 350M constraint	1151	1152	1
1153	2.2921422	16.1170338	Fixed point on 350M constraint	1152	1153	1
1154	2.2872151	16.1011516	Fixed point on 350M constraint	1153	1154	1
1155	2.2823332	16.0852537	Fixed point on 350M constraint	1154	1155	1
1156	2.2774987	16.0693423	Fixed point on 350M constraint	1155	1156	1
1157	2.2727071	16.0534196	Fixed point on 350M constraint	1156	1157	1
1158	2.2679629	16.0374813	Fixed point on 350M constraint	1157	1158	1
1159	2.2632639	16.0215294	Fixed point on 350M constraint	1158	1159	1
1160	2.2586101	16.0055664	Fixed point on 350M constraint	1159	1160	1
1161	2.2540014	15.9895898	Fixed point on 350M constraint	1160	1161	1
1162	2.2494380	15.9735998	Fixed point on 350M constraint	1161	1162	1
1163	2.2449196	15.9575964	Fixed point on 350M constraint	1162	1163	1
1164	2.2404487	15.9415816	Fixed point on 350M constraint	1163	1164	1
1165	2.2360230	15.9255557	Fixed point on 350M constraint	1164	1165	1
1166	2.2316402	15.9095140	Fixed point on 350M constraint	1165	1166	1
1167	2.2273071	15.8934634	Fixed point on 350M constraint	1166	1167	1
1168	2.2230169	15.8773993	Fixed point on 350M constraint	1167	1168	1
1169	2.2187741	15.8613217	Fixed point on 350M constraint	1168	1169	1
1170	2.2145765	15.8452351	Fixed point on 350M constraint	1169	1170	1
1171	2.2104240	15.8291350	Fixed point on 350M constraint	1170	1171	1
1172	2.2063190	15.8130237	Fixed point on 350M constraint	1171	1172	1
1173	2.2022592	15.7969012	Fixed point on 350M constraint	1172	1173	1
1174	2.1982445	15.7807675	Fixed point on 350M constraint	1173	1174	1
1175	2.1942773	15.7646203	Fixed point on 350M constraint	1174	1175	1
1176	2.1903530	15.7484641	Fixed point on 350M constraint	1175	1176	1
1177	2.1864784	15.7322966	Fixed point on 350M constraint	1176	1177	1
1178	2.1826489	15.7161202	Fixed point on 350M constraint	1177	1178	1
1179	2.1788647	15.6999303	Fixed point on 350M constraint	1178	1179	1
1180	2.1751256	15.6837315	Fixed point on 350M constraint	1179	1180	1

1181	2.1714339	15.6675214	Fixed point on 350M constraint	1180	1181	1
1182	2.1677897	15.6513023	Fixed point on 350M constraint	1181	1182	1
1183	2.1641906	15.6350720	Fixed point on 350M constraint	1182	1183	1
1184	2.1606368	15.6188327	Fixed point on 350M constraint	1183	1184	1
1185	2.1571304	15.6025822	Fixed point on 350M constraint	1184	1185	1
1186	2.1536714	15.5863226	Fixed point on 350M constraint	1185	1186	1
1187	2.1502553	15.5700519	Fixed point on 350M constraint	1186	1187	1
1188	2.1468889	15.5537744	Fixed point on 350M constraint	1187	1188	1
1189	2.1435677	15.5374857	Fixed point on 350M constraint	1188	1189	1
1190	2.1402917	15.5211880	Fixed point on 350M constraint	1189	1190	1
1191	2.1370631	15.5048814	Fixed point on 350M constraint	1190	1191	1
1192	2.1338820	15.4885657	Fixed point on 350M constraint	1191	1192	1
1193	2.1307460	15.4722411	Fixed point on 350M constraint	1192	1193	1
1194	2.1304455	15.4706668	Fixed point on 350M constraint	1193	1194	1
1195	2.1273570	15.4543332	Fixed point on 350M constraint	1194	1195	1
1196	2.1243159	15.4379906	Fixed point on 350M constraint	1195	1196	1
1197	2.1213200	15.4216412	Fixed point on 350M constraint	1196	1197	1
1198	2.1183693	15.4052807	Fixed point on 350M constraint	1197	1198	1
1199	2.1154683	15.3889156	Fixed point on 350M constraint	1198	1199	1
1200	2.1126124	15.3725393	Fixed point on 350M constraint	1199	1200	1
1201	2.1098018	15.3561563	Fixed point on 350M constraint	1200	1201	1
1202	2.1070386	15.3397665	Fixed point on 350M constraint	1201	1202	1
1203	2.1043228	15.3233678	Fixed point on 350M constraint	1202	1203	1
1204	2.1016545	15.3069623	Fixed point on 350M constraint	1203	1204	1
1205	2.0990313	15.2905478	Fixed point on 350M constraint	1204	1205	1
1206	2.0964556	15.2741289	Fixed point on 350M constraint	1205	1206	1
1207	2.0939274	15.2577009	Fixed point on 350M constraint	1206	1207	1
1208	2.0914443	15.2412663	Fixed point on 350M constraint	1207	1208	1
1209	2.0890109	15.2248226	Fixed point on 350M constraint	1208	1209	1
1210	2.0866205	15.2083745	Fixed point on 350M constraint	1209	1210	1
1211	2.0842797	15.1919196	Fixed point on 350M constraint	1210	1211	1
1212	2.0819864	15.1754579	Fixed point on 350M constraint	1211	1212	1
1213	2.0797383	15.1589896	Fixed point on 350M constraint	1212	1213	1
1214	2.0775376	15.1425167	Fixed point on 350M constraint	1213	1214	1
1215	2.0753822	15.1260349	Fixed point on 350M constraint	1214	1215	1
1216	2.0732764	15.1095485	Fixed point on 350M constraint	1215	1216	1
1217	2.0712158	15.0930577	Fixed point on 350M constraint	1216	1217	1
1218	2.0692026	15.0765602	Fixed point on 350M constraint	1217	1218	1
1219	2.0672369	15.0600559	Fixed point on 350M constraint	1218	1219	1
1220	2.0653187	15.0435471	Fixed point on 350M constraint	1219	1220	1
1221	2.0634456	15.0270338	Fixed point on 350M constraint	1220	1221	1
1222	2.0616222	15.0105138	Fixed point on 350M constraint	1221	1222	1
1223	2.0598440	14.9939893	Fixed point on 350M constraint	1222	1223	1
1224	2.0581133	14.9774603	Fixed point on 350M constraint	1223	1224	1
1225	2.0564300	14.9609245	Fixed point on 350M constraint	1224	1225	1
1226	2.0547942	14.9443865	Fixed point on 350M constraint	1225	1226	1
1227	2.0532035	14.9278441	Fixed point on 350M constraint	1226	1227	1
1228	2.0516626	14.9112949	Fixed point on 350M constraint	1227	1228	1
1229	2.0501668	14.8947434	Fixed point on 350M constraint	1228	1229	1
1230	2.0487185	14.8781874	Fixed point on 350M constraint	1229	1230	1
1231	2.0473176	14.8616270	Fixed point on 350M constraint	1230	1231	1
1232	2.0459642	14.8450643	Fixed point on 350M constraint	1231	1232	1
1233	2.0446583	14.8284949	Fixed point on 350M constraint	1232	1233	1
1234	2.0433997	14.8119232	Fixed point on 350M constraint	1233	1234	1
1235	2.0421887	14.7953493	Fixed point on 350M constraint	1234	1235	1
1236	2.0410228	14.7787709	Fixed point on 350M constraint	1235	1236	1
1237	2.0399066	14.7621902	Fixed point on 350M constraint	1236	1237	1
1238	2.0388356	14.7456051	Fixed point on 350M constraint	1237	1238	1
1239	2.0378143	14.7290177	Fixed point on 350M constraint	1238	1239	1
1240	2.0368382	14.7124281	Fixed point on 350M constraint	1239	1240	1
1241	2.0359096	14.6958362	Fixed point on 350M constraint	1240	1241	1
1242	2.0350284	14.6792398	Fixed point on 350M constraint	1241	1242	1
1243	2.0341946	14.6626434	Fixed point on 350M constraint	1242	1243	1
1244	2.0334083	14.6460426	Fixed point on 350M constraint	1243	1244	1
1245	2.0326695	14.6294394	Fixed point on 350M constraint	1244	1245	1
1246	2.0319781	14.6128363	Fixed point on 350M constraint	1245	1246	1
1247	2.0313319	14.5962310	Fixed point on 350M constraint	1246	1247	1
1248	2.0307354	14.5796234	Fixed point on 350M constraint	1247	1248	1
1249	2.0301863	14.5630135	Fixed point on 350M constraint	1248	1249	1
1250	2.0296824	14.5464014	Fixed point on 350M constraint	1249	1250	1

1251	2.0292283	14.5297893	Fixed point on 350M constraint	1250	1251	1
1252	2.0288193	14.5131772	Fixed point on 350M constraint	1251	1252	1
1253	2.0284601	14.4965629	Fixed point on 350M constraint	1252	1253	1
1254	2.0281460	14.4799463	Fixed point on 350M constraint	1253	1254	1
1255	2.0278794	14.4633297	Fixed point on 350M constraint	1254	1255	1
1256	2.0276625	14.4467131	Fixed point on 350M constraint	1255	1256	1
1257	2.0274907	14.4300965	Fixed point on 350M constraint	1256	1257	1
1258	2.0273665	14.4134777	Fixed point on 350M constraint	1257	1258	1
1259	2.0272897	14.3968611	Fixed point on 350M constraint	1258	1259	1
1260	2.0272625	14.3802423	Fixed point on 350M constraint	1259	1260	1
1261	2.0272603	14.3783334	Fixed point on 350M constraint	1260	1261	1
1262	2.0272851	14.3617145	Fixed point on 350M constraint	1261	1262	1
1263	2.0273552	14.3450980	Fixed point on 350M constraint	1262	1263	1
1264	2.0274749	14.3284791	Fixed point on 350M constraint	1263	1264	1
1265	2.0276399	14.3118625	Fixed point on 350M constraint	1264	1265	1
1266	2.0278523	14.2952437	Fixed point on 350M constraint	1265	1266	1
1267	2.0281144	14.2786294	Fixed point on 350M constraint	1266	1267	1
1268	2.0284217	14.2620128	Fixed point on 350M constraint	1267	1268	1
1269	2.0287764	14.2453984	Fixed point on 350M constraint	1268	1269	1
1270	2.0291786	14.2287841	Fixed point on 350M constraint	1269	1270	1
1271	2.0296282	14.2121720	Fixed point on 350M constraint	1270	1271	1
1272	2.0301253	14.1955621	Fixed point on 350M constraint	1271	1272	1
1273	2.0306698	14.1789523	Fixed point on 350M constraint	1272	1273	1
1274	2.0312618	14.1623447	Fixed point on 350M constraint	1273	1274	1
1275	2.0319013	14.1457371	Fixed point on 350M constraint	1274	1275	1
1276	2.0323102	14.1356894	Fixed point on 350M constraint	1275	1276	1
1277	2.0325904	14.1290801	Fixed point on 350M constraint	1276	1277	1
1278	2.0333225	14.1124770	Fixed point on 350M constraint	1277	1278	1
1279	2.0341043	14.0958761	Fixed point on 350M constraint	1278	1279	1
1280	2.0349335	14.0792797	Fixed point on 350M constraint	1279	1280	1
1281	2.0358079	14.0626834	Fixed point on 350M constraint	1280	1281	1
1282	2.0367320	14.0460892	Fixed point on 350M constraint	1281	1282	1
1283	2.0377013	14.0294996	Fixed point on 350M constraint	1282	1283	1
1284	2.0387181	14.0129122	Fixed point on 350M constraint	1283	1284	1
1285	2.0397823	13.9963270	Fixed point on 350M constraint	1284	1285	1
1286	2.0408962	13.9797464	Fixed point on 350M constraint	1285	1286	1
1287	2.0420553	13.9631680	Fixed point on 350M constraint	1286	1287	1
1288	2.0432596	13.9465918	Fixed point on 350M constraint	1287	1288	1
1289	2.0445136	13.9300202	Fixed point on 350M constraint	1288	1289	1
1290	2.0458151	13.9134530	Fixed point on 350M constraint	1289	1290	1
1291	2.0471640	13.8968880	Fixed point on 350M constraint	1290	1291	1
1292	2.0485581	13.8803276	Fixed point on 350M constraint	1291	1292	1
1293	2.0500019	13.8637716	Fixed point on 350M constraint	1292	1293	1
1294	2.0514909	13.8472179	Fixed point on 350M constraint	1293	1294	1
1295	2.0530273	13.8306710	Fixed point on 350M constraint	1294	1295	1
1296	2.0546112	13.8141263	Fixed point on 350M constraint	1295	1296	1
1297	2.0560775	13.7992412	Fixed point on 350M constraint	1296	1297	1
1298	2.0565453	13.7945475	Fixed point on 350M constraint	1297	1298	1
1299	2.0582218	13.7780140	Fixed point on 350M constraint	1298	1299	1
1300	2.0599480	13.7614827	Fixed point on 350M constraint	1299	1300	1
1301	2.0617194	13.7449582	Fixed point on 350M constraint	1300	1301	1
1302	2.0635382	13.7284382	Fixed point on 350M constraint	1301	1302	1
1303	2.0654045	13.7119227	Fixed point on 350M constraint	1302	1303	1
1304	2.0673183	13.6954139	Fixed point on 350M constraint	1303	1304	1
1305	2.0692795	13.6789096	Fixed point on 350M constraint	1304	1305	1
1306	2.0712881	13.6624120	Fixed point on 350M constraint	1305	1306	1
1307	2.0733419	13.6459190	Fixed point on 350M constraint	1306	1307	1
1308	2.0754432	13.6294326	Fixed point on 350M constraint	1307	1308	1
1309	2.0775919	13.6129508	Fixed point on 350M constraint	1308	1309	1
1310	2.0797880	13.5964757	Fixed point on 350M constraint	1309	1310	1
1311	2.0820294	13.5800073	Fixed point on 350M constraint	1310	1311	1
1312	2.0843181	13.5635457	Fixed point on 350M constraint	1311	1312	1
1313	2.0866544	13.5470886	Fixed point on 350M constraint	1312	1313	1
1314	2.0890380	13.5306404	Fixed point on 350M constraint	1313	1314	1
1315	2.0914669	13.5141967	Fixed point on 350M constraint	1314	1315	1
1316	2.0939454	13.4977621	Fixed point on 350M constraint	1315	1316	1
1317	2.0964669	13.4813319	Fixed point on 350M constraint	1316	1317	1
1318	2.0990381	13.4649107	Fixed point on 350M constraint	1317	1318	1
1319	2.1016545	13.4484962	Fixed point on 350M constraint	1318	1319	1
1320	2.1043183	13.4320907	Fixed point on 350M constraint	1319	1320	1

1321	2.1070295	13.4156920	Fixed point on 350M constraint	1320	1321	1
1322	2.1097860	13.3993000	Fixed point on 350M constraint	1321	1322	1
1323	2.1125899	13.3829147	Fixed point on 350M constraint	1322	1323	1
1324	2.1154412	13.3665407	Fixed point on 350M constraint	1323	1324	1
1325	2.1183399	13.3501711	Fixed point on 350M constraint	1324	1325	1
1326	2.1212839	13.3338128	Fixed point on 350M constraint	1325	1326	1
1327	2.1242730	13.3174612	Fixed point on 350M constraint	1326	1327	1
1328	2.1273096	13.3011186	Fixed point on 350M constraint	1327	1328	1
1329	2.1303936	13.2847827	Fixed point on 350M constraint	1328	1329	1
1330	2.1335250	13.2684581	Fixed point on 350M constraint	1329	1330	1
1331	2.1367016	13.2521425	Fixed point on 350M constraint	1330	1331	1
1332	2.1399234	13.2358335	Fixed point on 350M constraint	1331	1332	1
1333	2.1431927	13.2195359	Fixed point on 350M constraint	1332	1333	1
1334	2.1465093	13.2032449	Fixed point on 350M constraint	1333	1334	1
1335	2.1498712	13.1869652	Fixed point on 350M constraint	1334	1335	1
1336	2.1532805	13.1706945	Fixed point on 350M constraint	1335	1336	1
1337	2.1567350	13.1544349	Fixed point on 350M constraint	1336	1337	1
1338	2.1602369	13.1381822	Fixed point on 350M constraint	1337	1338	1
1339	2.1637840	13.1219406	Fixed point on 350M constraint	1338	1339	1
1340	2.1673785	13.1057103	Fixed point on 350M constraint	1339	1340	1
1341	2.1710182	13.0894890	Fixed point on 350M constraint	1340	1341	1
1342	2.1747053	13.0732789	Fixed point on 350M constraint	1341	1342	1
1343	2.1784377	13.0570778	Fixed point on 350M constraint	1342	1343	1
1344	2.1822151	13.0408879	Fixed point on 350M constraint	1343	1344	1
1345	2.1860401	13.0247092	Fixed point on 350M constraint	1344	1345	1
1346	2.1899102	13.0085396	Fixed point on 350M constraint	1345	1346	1
1347	2.1938277	12.9923834	Fixed point on 350M constraint	1346	1347	1
1348	2.1977904	12.9762361	Fixed point on 350M constraint	1347	1348	1
1349	2.2018006	12.9601002	Fixed point on 350M constraint	1348	1349	1
1350	2.2058536	12.9439754	Fixed point on 350M constraint	1349	1350	1
1351	2.2099541	12.9278641	Fixed point on 350M constraint	1350	1351	1
1352	2.2141020	12.9117618	Fixed point on 350M constraint	1351	1352	1
1353	2.2182929	12.8956730	Fixed point on 350M constraint	1352	1353	1
1354	2.2225311	12.8795954	Fixed point on 350M constraint	1353	1354	1
1355	2.2268168	12.8635313	Fixed point on 350M constraint	1354	1355	1
1356	2.2311454	12.8474761	Fixed point on 350M constraint	1355	1356	1
1357	2.2355215	12.8314345	Fixed point on 350M constraint	1356	1357	1
1358	2.2399427	12.8154063	Fixed point on 350M constraint	1357	1358	1
1359	2.2444091	12.7993893	Fixed point on 350M constraint	1358	1359	1
1360	2.2489206	12.7833858	Fixed point on 350M constraint	1359	1360	1
1361	2.2534796	12.7673958	Fixed point on 350M constraint	1360	1361	1
1362	2.2580815	12.7514170	Fixed point on 350M constraint	1361	1362	1
1363	2.2627308	12.7354517	Fixed point on 350M constraint	1362	1363	1
1364	2.2674253	12.7194976	Fixed point on 350M constraint	1363	1364	1
1365	2.2721649	12.7035593	Fixed point on 350M constraint	1364	1365	1
1366	2.2769497	12.6876344	Fixed point on 350M constraint	1365	1366	1
1367	2.2817820	12.6717207	Fixed point on 350M constraint	1366	1367	1
1368	2.2866571	12.6558228	Fixed point on 350M constraint	1367	1368	1
1369	2.2915774	12.6399383	Fixed point on 350M constraint	1368	1369	1
1370	2.2965429	12.6240674	Fixed point on 350M constraint	1369	1370	1
1371	2.3015558	12.6082098	Fixed point on 350M constraint	1370	1371	1
1372	2.3066116	12.5923681	Fixed point on 350M constraint	1371	1372	1
1373	2.3117148	12.5765375	Fixed point on 350M constraint	1372	1373	1
1374	2.3168609	12.5607249	Fixed point on 350M constraint	1373	1374	1
1375	2.3180605	12.5570598	Fixed point on 350M constraint	1374	1375	1
1376	2.3229445	12.5421971	Fixed point on 350M constraint	1375	1376	1
1377	2.3281810	12.5264115	Fixed point on 350M constraint	1376	1377	1
1378	2.3334626	12.5106416	Fixed point on 350M constraint	1377	1378	1
1379	2.3387894	12.4948851	Fixed point on 350M constraint	1378	1379	1
1380	2.3441613	12.4791444	Fixed point on 350M constraint	1379	1380	1
1381	2.3495784	12.4634194	Fixed point on 350M constraint	1380	1381	1
1382	2.3550384	12.4477079	Fixed point on 350M constraint	1381	1382	1
1383	2.3605435	12.4320143	Fixed point on 350M constraint	1382	1383	1
1384	2.3660938	12.4163342	Fixed point on 350M constraint	1383	1384	1
1385	2.3716893	12.4006698	Fixed point on 350M constraint	1384	1385	1
1386	2.3773299	12.3850234	Fixed point on 350M constraint	1385	1386	1
1387	2.3830134	12.3693905	Fixed point on 350M constraint	1386	1387	1
1388	2.3887421	12.3537733	Fixed point on 350M constraint	1387	1388	1
1389	2.3945159	12.3381740	Fixed point on 350M constraint	1388	1389	1
1390	2.4003326	12.3225905	Fixed point on 350M constraint	1389	1390	1

1391	2.4061945	12.3070227	Fixed point on 350M constraint	1390	1391	1
1392	2.4120992	12.2914729	Fixed point on 350M constraint	1391	1392	1
1393	2.4180514	12.2759365	Fixed point on 350M constraint	1392	1393	1
1394	2.4240442	12.2604203	Fixed point on 350M constraint	1393	1394	1
1395	2.4300844	12.2449199	Fixed point on 350M constraint	1394	1395	1
1396	2.4361675	12.2294352	Fixed point on 350M constraint	1395	1396	1
1397	2.4422935	12.2139685	Fixed point on 350M constraint	1396	1397	1
1398	2.4484647	12.1985197	Fixed point on 350M constraint	1397	1398	1
1399	2.4537887	12.1852516	Fixed point on 350M constraint	1398	1399	1
1400	2.4600027	12.1698185	Fixed point on 350M constraint	1399	1400	1
1401	2.4662619	12.1544057	Fixed point on 350M constraint	1400	1401	1
1402	2.4725639	12.1390085	Fixed point on 350M constraint	1401	1402	1
1403	2.4789111	12.1236294	Fixed point on 350M constraint	1402	1403	1
1404	2.4853012	12.1082682	Fixed point on 350M constraint	1403	1404	1
1405	2.4885538	12.1004686	Fixed point on 350M constraint	1404	1405	1
1406	2.4949890	12.0851253	Fixed point on 350M constraint	1405	1406	1
1407	2.5014648	12.0698001	Fixed point on 350M constraint	1406	1407	1
1408	2.5079880	12.0544928	Fixed point on 350M constraint	1407	1408	1
1409	2.5145519	12.0392035	Fixed point on 350M constraint	1408	1409	1
1410	2.5211586	12.0239321	Fixed point on 350M constraint	1409	1410	1
1411	2.5278105	12.0086810	Fixed point on 350M constraint	1410	1411	1
1412	2.5345053	11.9934478	Fixed point on 350M constraint	1411	1412	1
1413	2.5412451	11.9782348	Fixed point on 350M constraint	1412	1413	1
1414	2.5480257	11.9630376	Fixed point on 350M constraint	1413	1414	1
1415	2.5548513	11.9478628	Fixed point on 350M constraint	1414	1415	1
1416	2.5617198	11.9327059	Fixed point on 350M constraint	1415	1416	1
1417	2.5686290	11.9175671	Fixed point on 350M constraint	1416	1417	1
1418	2.5755832	11.9024484	Fixed point on 350M constraint	1417	1418	1
1419	2.5825804	11.8873500	Fixed point on 350M constraint	1418	1419	1
1420	2.5896204	11.8722718	Fixed point on 350M constraint	1419	1420	1
1421	2.5967033	11.8572115	Fixed point on 350M constraint	1420	1421	1
1422	2.6038291	11.8421715	Fixed point on 350M constraint	1421	1422	1
1423	2.6109977	11.8271517	Fixed point on 350M constraint	1422	1423	1
1424	2.6182093	11.8121543	Fixed point on 350M constraint	1423	1424	1
1425	2.6254636	11.7971749	Fixed point on 350M constraint	1424	1425	1
1426	2.6327609	11.7822157	Fixed point on 350M constraint	1425	1426	1
1427	2.6401010	11.7672767	Fixed point on 350M constraint	1426	1427	1
1428	2.6474817	11.7523602	Fixed point on 350M constraint	1427	1428	1
1429	2.6549053	11.7374639	Fixed point on 350M constraint	1428	1429	1
1430	2.6623718	11.7225878	Fixed point on 350M constraint	1429	1430	1
1431	2.6698811	11.7077319	Fixed point on 350M constraint	1430	1431	1
1432	2.6774310	11.6928984	Fixed point on 350M constraint	1431	1432	1
1433	2.6850261	11.6780852	Fixed point on 350M constraint	1432	1433	1
1434	2.6926595	11.6632945	Fixed point on 350M constraint	1433	1434	1
1435	2.7003380	11.6485262	Fixed point on 350M constraint	1434	1435	1
1436	2.7080571	11.6337781	Fixed point on 350M constraint	1435	1436	1
1437	2.7158191	11.6190502	Fixed point on 350M constraint	1436	1437	1
1438	2.7236217	11.6043448	Fixed point on 350M constraint	1437	1438	1
1439	2.7314671	11.5896640	Fixed point on 350M constraint	1438	1439	1
1440	2.7393531	11.5750013	Fixed point on 350M constraint	1439	1440	1
1441	2.7472820	11.5603632	Fixed point on 350M constraint	1440	1441	1
1442	2.7552515	11.5457477	Fixed point on 350M constraint	1441	1442	1
1443	2.7632638	11.5311545	Fixed point on 350M constraint	1442	1443	1
1444	2.7713168	11.5165816	Fixed point on 350M constraint	1443	1444	1
1445	2.7794125	11.5020334	Fixed point on 350M constraint	1444	1445	1
1446	2.7875467	11.4875076	Fixed point on 350M constraint	1445	1446	1
1447	2.7957259	11.4730043	Fixed point on 350M constraint	1446	1447	1
1448	2.8039434	11.4585235	Fixed point on 350M constraint	1447	1448	1
1449	2.8122038	11.4440673	Fixed point on 350M constraint	1448	1449	1
1450	2.8205048	11.4296337	Fixed point on 350M constraint	1449	1450	1
1451	2.8288464	11.4152224	Fixed point on 350M constraint	1450	1451	1
1452	2.8372285	11.4008359	Fixed point on 350M constraint	1451	1452	1
1453	2.8456513	11.3864719	Fixed point on 350M constraint	1452	1453	1
1454	2.8541168	11.3721325	Fixed point on 350M constraint	1453	1454	1
1455	2.8626207	11.3578156	Fixed point on 350M constraint	1454	1455	1
1456	2.8711675	11.3435234	Fixed point on 350M constraint	1455	1456	1
1457	2.8797548	11.3292559	Fixed point on 350M constraint	1456	1457	1
1458	2.8883827	11.3150109	Fixed point on 350M constraint	1457	1458	1
1459	2.8970489	11.3007906	Fixed point on 350M constraint	1458	1459	1
1460	2.9057580	11.2865949	Fixed point on 350M constraint	1459	1460	1

1461	2.9145054	11.2724240	Fixed point on 350M constraint	1460	1461	1
1462	2.9232956	11.2582778	Fixed point on 350M constraint	1461	1462	1
1463	2.9321241	11.2441563	Fixed point on 350M constraint	1462	1463	1
1464	2.9409932	11.2300595	Fixed point on 350M constraint	1463	1464	1
1465	2.9499006	11.2159873	Fixed point on 350M constraint	1464	1465	1
1466	2.9588508	11.2019399	Fixed point on 350M constraint	1465	1466	1
1467	2.9678393	11.1879172	Fixed point on 350M constraint	1466	1467	1
1468	2.9768684	11.1739192	Fixed point on 350M constraint	1467	1468	1
1469	2.9859381	11.1599482	Fixed point on 350M constraint	1468	1469	1
1470	2.9950461	11.1460018	Fixed point on 350M constraint	1469	1470	1
1471	3.0041946	11.1320825	Fixed point on 350M constraint	1470	1471	1
1472	3.0133815	11.1181878	Fixed point on 350M constraint	1471	1472	1
1473	3.0194548	11.1090586	Fixed point from 60M envelope of arcs generated from FOS 1E on 350M intersect	1472	1473	0.65
1474	3.0238303	11.1091462	Fixed point from 60M envelope of arcs generated from FOS 1E	1473	1474	0.26
1475	3.0405668	11.1097571	Fixed point from 60M envelope of arcs generated from FOS 1E	1474	1475	1
1476	3.0572894	11.1106442	Fixed point from 60M envelope of arcs generated from FOS 1E	1475	1476	1
1477	3.7238017	11.1531300	Fixed point from 60M envelope of arcs generated from FOS 3E	1476	1477	39.88
1478	4.6001753	10.7048280	Fixed point from 60M envelope of arcs generated from FOS 4E	1477	1478	58.825
1479	4.6150260	10.6971137	Fixed point from 60M envelope of arcs generated from FOS 4E	1478	1479	1
1480	4.6300026	10.6896487	Fixed point from 60M envelope of arcs generated from FOS 4E	1479	1480	1
1481	4.6451051	10.6824330	Fixed point from 60M envelope of arcs generated from FOS 4E	1480	1481	1
1482	4.6603221	10.6754665	Fixed point from 60M envelope of arcs generated from FOS 4E	1481	1482	1
1483	4.6756560	10.6687561	Fixed point from 60M envelope of arcs generated from FOS 4E	1482	1483	1
1484	4.6910999	10.6622995	Fixed point from 60M envelope of arcs generated from FOS 4E	1483	1484	1
1485	4.7066471	10.6561011	Fixed point from 60M envelope of arcs generated from FOS 4E	1484	1485	1
1486	4.7222977	10.6501588	Fixed point from 60M envelope of arcs generated from FOS 4E	1485	1486	1
1487	4.7380470	10.6444792	Fixed point from 60M envelope of arcs generated from FOS 4E	1486	1487	1
1488	4.7538861	10.6390623	Fixed point from 60M envelope of arcs generated from FOS 4E	1487	1488	1
1489	4.7698149	10.6339082	Fixed point from 60M envelope of arcs generated from FOS 4E	1488	1489	1
1490	4.7858267	10.6290192	Fixed point from 60M envelope of arcs generated from FOS 4E	1489	1490	1
1491	4.8019192	10.6243973	Fixed point from 60M envelope of arcs generated from FOS 4E	1490	1491	1
1492	4.8180857	10.6200405	Fixed point from 60M envelope of arcs generated from FOS 4E	1491	1492	1
1493	4.8343239	10.6159554	Fixed point from 60M envelope of arcs generated from FOS 4E	1492	1493	1
1494	4.8506270	10.6121398	Fixed point from 60M envelope of arcs generated from FOS 4E	1493	1494	1
1495	4.8669906	10.6085960	Fixed point from 60M envelope of arcs generated from FOS 4E	1494	1495	1
1496	4.8834123	10.6053216	Fixed point from 60M envelope of arcs generated from FOS 4E	1495	1496	1
1497	4.8998876	10.6023235	Fixed point from 60M envelope of arcs generated from FOS 4E	1496	1497	1
1498	4.9164099	10.5995971	Fixed point from 60M envelope of arcs generated from FOS 4E	1497	1498	1
1499	4.9329745	10.5971469	Fixed point from 60M envelope of arcs generated from FOS 4E	1498	1499	1
1500	4.9495793	10.5949730	Fixed point from 60M envelope of arcs generated from FOS 4E	1499	1500	1
1501	4.9662174	10.5930731	Fixed point from 60M envelope of arcs generated from FOS 4E	1500	1501	1
1502	4.9828844	10.5914494	Fixed point from 60M envelope of arcs generated from FOS 4E	1501	1502	1
1503	4.9995757	10.5901041	Fixed point from 60M envelope of arcs generated from FOS 4E	1502	1503	1
1504	5.0162891	10.5890374	Fixed point from 60M envelope of arcs generated from FOS 4E	1503	1504	1
1505	5.0330156	10.5882469	Fixed point from 60M envelope of arcs generated from FOS 4E	1504	1505	1
1506	6.0088893	10.4277134	Fixed point from 60M envelope of arcs generated from FOS 5E	1505	1506	59.05
1507	6.3285958	10.3279645	Fixed point from 60M envelope of arcs generated from FOS 6E	1506	1507	20
1508	6.3446052	10.3230552	Fixed point from 60M envelope of arcs generated from FOS 6E	1507	1508	1
1509	6.3606927	10.3184132	Fixed point from 60M envelope of arcs generated from FOS 6E	1508	1509	1
1510	6.3768583	10.3140384	Fixed point from 60M envelope of arcs generated from FOS 6E	1509	1510	1
1511	6.3930931	10.3099353	Fixed point from 60M envelope of arcs generated from FOS 6E	1510	1511	1
1512	6.4093924	10.3061018	Fixed point from 60M envelope of arcs generated from FOS 6E	1511	1512	1
1513	6.4257542	10.3025399	Fixed point from 60M envelope of arcs generated from FOS 6E	1512	1513	1
1514	6.4421738	10.2992499	Fixed point from 60M envelope of arcs generated from FOS 6E	1513	1514	1
1515	6.4586468	10.2962360	Fixed point from 60M envelope of arcs generated from FOS 6E	1514	1515	1
1516	6.4751665	10.2934939	Fixed point from 60M envelope of arcs generated from FOS 6E	1515	1516	1
1517	6.4917305	10.2910303	Fixed point from 60M envelope of arcs generated from FOS 6E	1516	1517	1
1518	6.5083321	10.2888406	Fixed point from 60M envelope of arcs generated from FOS 6E	1517	1518	1
1519	6.5249669	10.2869295	Fixed point from 60M envelope of arcs generated from FOS 6E	1518	1519	1
1520	6.5416326	10.2852945	Fixed point from 60M envelope of arcs generated from FOS 6E	1519	1520	1
1521	6.5583246	10.2839358	Fixed point from 60M envelope of arcs generated from FOS 6E	1520	1521	1
1522	6.5750341	10.2828579	Fixed point from 60M envelope of arcs generated from FOS 6E	1521	1522	1
1523	6.5917609	10.2820584	Fixed point from 60M envelope of arcs generated from FOS 6E	1522	1523	1
1524	6.6084984	10.2815351	Fixed point from 60M envelope of arcs generated from FOS 6E	1523	1524	1
1525	6.6252421	10.2812925	Fixed point from 60M envelope of arcs generated from FOS 6E	1524	1525	1
1526	6.6419874	10.2813307	Fixed point from 60M envelope of arcs generated from FOS 6E	1525	1526	1
1527	6.6587300	10.2816451	Fixed point from 60M envelope of arcs generated from FOS 6E	1526	1527	1
1528	6.6754652	10.2822403	Fixed point from 60M envelope of arcs generated from FOS 6E	1527	1528	1
1529	6.6921885	10.2831139	Fixed point from 60M envelope of arcs generated from FOS 6E	1528	1529	1

1530	6.7088956	10.2842660	Fixed point from 60M envelope of arcs generated from FOS 6E	1529	1530	1
1531	6.7255797	10.2856965	Fixed point from 60M envelope of arcs generated from FOS 6E	1530	1531	1
1532	6.7422363	10.2874033	Fixed point from 60M envelope of arcs generated from FOS 6E	1531	1532	1
1533	6.7588653	10.2893909	Fixed point from 60M envelope of arcs generated from FOS 6E	1532	1533	1
1534	6.7754578	10.2916524	Fixed point from 60M envelope of arcs generated from FOS 6E	1533	1534	1
1535	6.7920093	10.2941923	Fixed point from 60M envelope of arcs generated from FOS 6E	1534	1535	1
1536	6.8085154	10.2970086	Fixed point from 60M envelope of arcs generated from FOS 6E	1535	1536	1
1537	6.8249738	10.3000988	Fixed point from 60M envelope of arcs generated from FOS 6E	1536	1537	1
1538	6.8413777	10.3034630	Fixed point from 60M envelope of arcs generated from FOS 6E	1537	1538	1
1539	6.8577249	10.3071011	Fixed point from 60M envelope of arcs generated from FOS 6E	1538	1539	1
1540	6.8740087	10.3110111	Fixed point from 60M envelope of arcs generated from FOS 6E	1539	1540	1
1541	6.8902246	10.3151927	Fixed point from 60M envelope of arcs generated from FOS 6E	1540	1541	1
1542	6.9063682	10.3196439	Fixed point from 60M envelope of arcs generated from FOS 6E	1541	1542	1
1543	6.9224348	10.3243623	Fixed point from 60M envelope of arcs generated from FOS 6E	1542	1543	1
1544	6.9384202	10.3293502	Fixed point from 60M envelope of arcs generated from FOS 6E	1543	1544	1
1545	6.9543219	10.3346053	Fixed point from 60M envelope of arcs generated from FOS 6E	1544	1545	1
1546	6.9701334	10.3401232	Fixed point from 60M envelope of arcs generated from FOS 6E	1545	1546	1
1547	6.9858500	10.3459061	Fixed point from 60M envelope of arcs generated from FOS 6E	1546	1547	1
1548	7.0014697	10.3519495	Fixed point from 60M envelope of arcs generated from FOS 6E	1547	1548	1
1549	7.0169856	10.3582535	Fixed point from 60M envelope of arcs generated from FOS 6E	1548	1549	1
1550	7.0323933	10.3648156	Fixed point from 60M envelope of arcs generated from FOS 6E	1549	1550	1
1551	7.0476905	10.3716339	Fixed point from 60M envelope of arcs generated from FOS 6E	1550	1551	1
1552	7.0628728	10.3787081	Fixed point from 60M envelope of arcs generated from FOS 6E	1551	1552	1
1553	7.0779334	10.3860339	Fixed point from 60M envelope of arcs generated from FOS 6E	1552	1553	1
1554	7.0928702	10.3936111	Fixed point from 60M envelope of arcs generated from FOS 6E	1553	1554	1
1555	7.1076785	10.4014355	Fixed point from 60M envelope of arcs generated from FOS 6E	1554	1555	1
1556	7.1223563	10.4095091	Fixed point from 60M envelope of arcs generated from FOS 6E	1555	1556	1
1557	7.1368946	10.4178252	Fixed point from 60M envelope of arcs generated from FOS 6E	1556	1557	1
1558	7.1512955	10.4263817	Fixed point from 60M envelope of arcs generated from FOS 6E	1557	1558	1
1559	7.1655502	10.4351807	Fixed point from 60M envelope of arcs generated from FOS 6E	1558	1559	1
1560	7.1796564	10.4442155	Fixed point from 60M envelope of arcs generated from FOS 6E	1559	1560	1
1561	7.1936097	10.4534839	Fixed point from 60M envelope of arcs generated from FOS 6E	1560	1561	1
1562	7.2074055	10.4629858	Fixed point from 60M envelope of arcs generated from FOS 6E	1561	1562	1
1563	7.2210439	10.4727168	Fixed point from 60M envelope of arcs generated from FOS 6E	1562	1563	1
1564	7.2345159	10.4826746	Fixed point from 60M envelope of arcs generated from FOS 6E	1563	1564	1
1565	7.2478216	10.4928570	Fixed point from 60M envelope of arcs generated from FOS 6E	1564	1565	1
1566	8.1389623	10.9395690	Fixed Point on 200M limit	1565	1566	59.5

7. State bodies responsible for the preparation of the Submission

This submission, together with all maps, figures, enclosures, appendices and digital databases was prepared jointly by the National Oceanography Centre, Southampton, UK and the United Kingdom Hydrographic Office.