



COMMISSION ON THE LIMITS
OF THE CONTINENTAL SHELF

Distr.
GENERAL

CLCS/11/Add.1/Corr.1
19 November 1999

ENGLISH ONLY

Sixth session
New York, 30 August-3 September 1999

SCIENTIFIC AND TECHNICAL GUIDELINES OF THE COMMISSION
ON THE LIMITS OF THE CONTINENTAL SHELF

Annexes II-IV to the Guidelines adopted by the Commission
on 3 September 1999 at its sixth session

Corrigendum

Annex II

1. Page 3, para. 2, II. Determination of the foot of the continental slope:

Subparagraph (a) should read

- (a) Maximum change in the gradient at the base of the continental slope
(article 76 (4));

2. Page 5, figure II.1

Page 6, figure II.2

Replace the figures with the attached.



10/11/2011

10/11/2011

10/11/2011

10/11/2011

10/11/2011

10/11/2011

10/11/2011

10/11/2011

10/11/2011

10/11/2011

10/11/2011

10/11/2011

10/11/2011

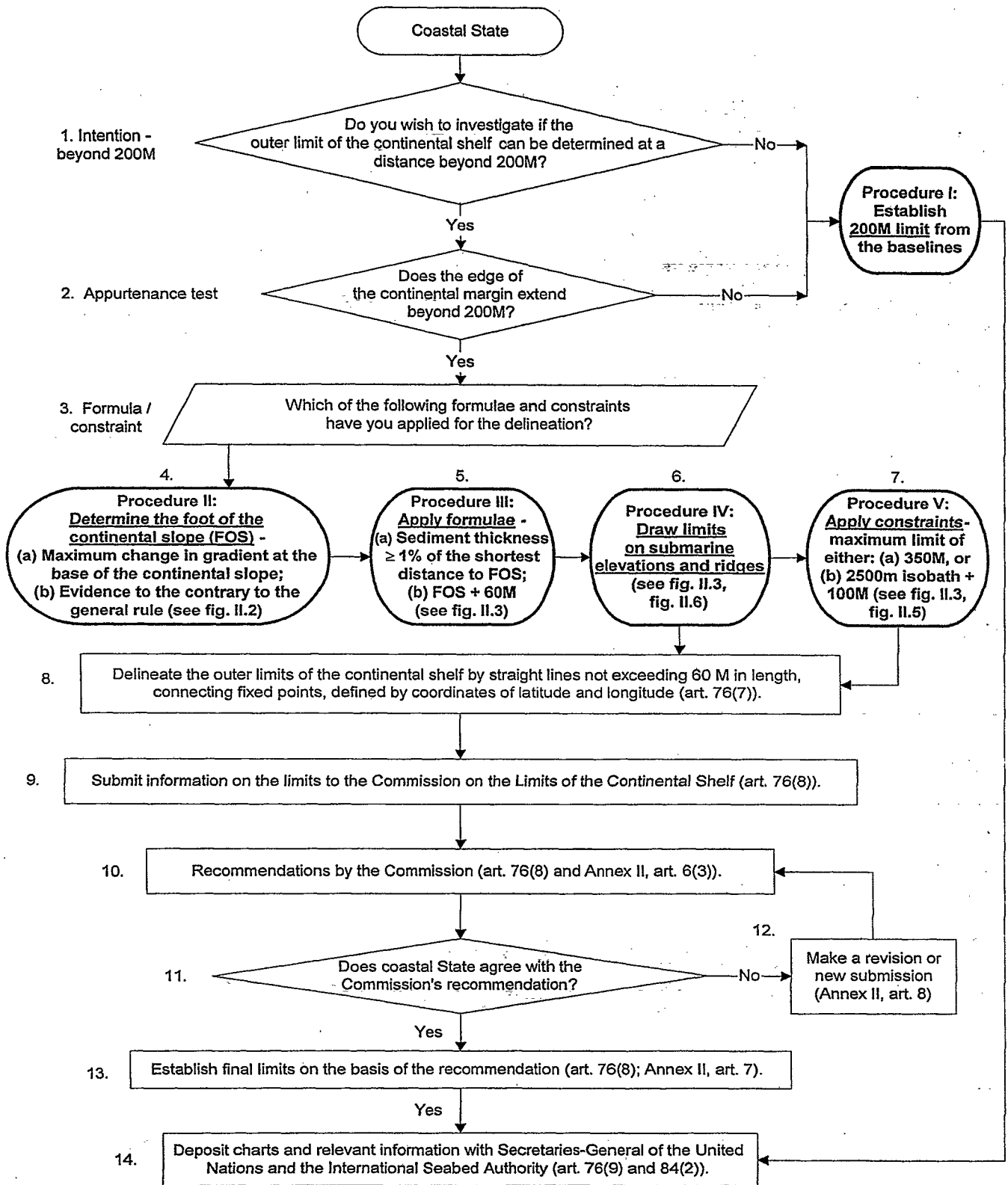


Figure II.1. Master Flowchart for the establishment of the outer limits of the continental shelf.

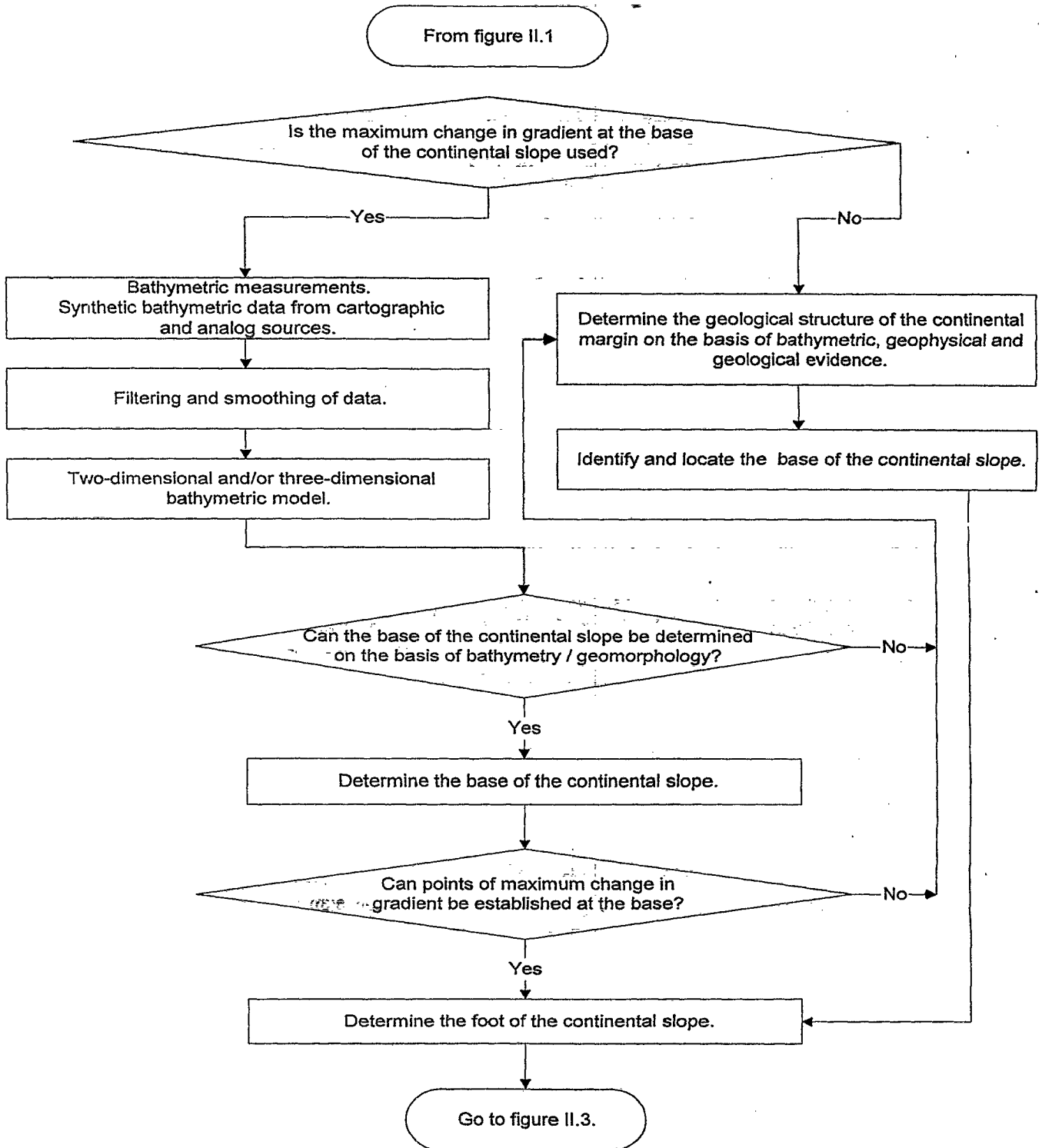


Figure II.2. Sub-flowchart showing the determination of the foot of the continental slope - indicated on Master Flowchart (fig. II.1) as procedure II.